

Rosny
College

2019
Enrolment
Guide



Secretary's Foreword

2019 is an exciting time to be starting Year 11 or embarking on your final year of school. There is no longer a one-size-fits-all approach to study at school, and there are a number of different ways to structure your courses to suit your strengths and aspirations.

Completing Year 12 gives you a meaningful qualification that will open doors to a variety of options for you beyond school. Many of you may already know what you want to do when you finish school, but many of you may not have a firm plan just yet. There are many different options to plan for the future you would like. If you are not sure what you want to do or what your options are, talk to your teachers, parents or carers, look at the information you have gathered through My Education, use the information in the Guide and visit www.anything.tas.gov.au, which includes information about what choices are available.

Schools and colleges offer a lot of flexibility, diverse practical and classroom-based subjects and extracurricular activities, some of which you might not have even considered. You can choose a broad range of study options that allow you to consider a variety of career-paths once you complete school as a way of keeping your options open, or you can make targeted choices to a specific area or work sector that you are interested in. The most important thing is that you take control of your final years of school in order to get what you want out of your learning.

This will be a time of growth where you will be learning about what you want out of life and how to achieve it, this applies not only in school but in your personal life as well. It's important to take time to look after your physical and mental health. Draw on the support of those around you, speak with your family, friends or teachers about anything that concerns you or you are not sure about and ask questions and seek advice and/or help when you need it. Most of all, enjoy this time and use it to set yourself up for a successful and fulfilling future. Do your best with what you have available to you and seek advice and opportunities wherever you can. Everything is there for the taking! All the best for your studies in 2019 and beyond.

Tim Bullard

Secretary
Department of Education



Principal's Welcome

I extend a warm welcome to students and parents who are joining our community. The very important Years 11 and 12 provide a transition from high school to further study or work enabling new opportunities and possibilities to be explored. This booklet describes the programs, support structures and facilities that we offer to assist you on this journey. We work in close collaboration with our associated high schools in what we call the teggana Collective (teggana is a local aboriginal word meaning 'heart').

As you peruse this enrolment guide you will see that some courses are offered on multiple campuses, whilst other courses are only available at Rosny College, Bayview Secondary College or Sorell District School as well as a specialist off site programs provided by Rose Bay and Clarence High Schools. Our collective aim is to ensure that we are supporting every young person to successfully complete Year 12 or its equivalent.

At this important phase in your life you will be treated as a young adult and in turn we expect that you will take responsibility for your learning through regular attendance and completion of all work to the best of your ability. You are expected to respect other members of the community and the environment, to build positive relationships with staff and other students and to make a positive contribution to the school community.

We are justifiably proud of our achievements in both academic and vocational learning. Our friendly staff will assist you during the enrolment process to ensure that your course will enable you to gain the

Tasmanian Certificate of Education (TCE), possibly pursue a vocational qualification and achieve an ATAR score. Remember, "learning is not a spectator sport" (D. Blocher) – your efforts now are important to gain reward in the future. You can try new activities such as outdoor education, pursue roles in our outstanding performing arts program, or gain leadership skills and engage in our enrichment program.

It is well known that students achieve the best possible outcomes when the student, parents/carers and the school work together. Parents and carers are invited to contact the College if you would like to make an appointment to visit the College prior to your child's enrolment. Our staff are always willing to help resolve any questions or concerns you may have and we appreciate information that you provide to assist us to better meet the needs of your child. This also applies if you would like to know further information about courses available on campuses other than Rosny.

We offer challenge, excitement and reward to all students and this comes with the opportunity to develop new friendships. We will set you on your pathway to a future career or further education and we look forward to meeting you in February 2019.

Deb Day

Rosny College Principal



List of Contents

Secretary's Foreword	2	Humanities and Social Sciences	24
Principal's Welcome	3	Information Technology	26
Our Mission and Values; Timetable	5	Languages	27
Rights and Responsibilities	6	Mathematics	28
Key Dates	7	Mixed Fields and STEAM	30
Student Support	8	Performing Arts	31
Assessment and Reporting	10	Science	34
Enrolment and Courses	11	Technologies: Design and Technologies	36
Study Loads	12	Technologies: Food and Hospitality	38
Alternate Programs	12	Visual Arts	40
The Tasmanian Certificate of Education	13	Programs for Students with	42
Pre-Tertiary Subjects	14	High or Additional Learning Needs	
Vocational Education and Training Programs	15	Essential Skills Courses	43
Links with the University of Tasmania	16	Extension and Enrichment	44
Explanation of Subject Grids	17	TCE Extension Courses	45
Behavioural Studies	18	Subject Index	46
Business Studies	20	Accessibility and Accommodation	48
English	21	2019 Vocational Education and Training	49
Health, Physical and Outdoor Education	22	Planning for Enrolment	50

Using This Booklet

This booklet gives you an introduction to Rosny College and the teggana Collective (courses available at our associated campuses). It outlines the facilities, programs and support services that are provided and it gives you an insight into life as a student in Years 11 and 12.

The guide is designed to be read in conjunction with the Course Information Handbook for Years 11 and 12

(www.education.tas.gov.au/students/school-and-colleges/years-11-12) as well as the information which is available on our website rosnyc.schoolzineplus.com

Important Information

The information in this Enrolment Workbook is accurate at the time of publication (July 2018). These courses are based on those that ran in 2018. Availability of courses for 2019 will depend upon the level of interest indicated.

Studying at Another teggana Campus

If all or part of your course is at another teggana campus you will receive a separate handbook before your commencement date outlining the important things that you will need to know. You can elect to study at an alternative campus through the Rosny College enrolment process or through the individual schools independently.

Key Contacts

For general enrolment information contact:
Rosny College (03) 6244 9200

For Vocational (VET) information contact:
Rosny College VET Office (03) 6244 9295

Rosny College

An inspiring and empowering learning community

Rosny was founded in 1973 to provide opportunities for post-year 10 education in the Clarence Municipality and it still draws the large majority of its students from schools on the eastern shore of the Derwent River in Hobart. The geographical setting of the campus, close to the river and to the commercial and business heart of the district, makes it ideally placed to take advantage of these assets in the educational opportunities it provides for its students. In 2016, Rosny formally joined forces with its associated high schools, Bayview, Campania, Clarence, Rose Bay, Sorell and Triabunna to form the teggana Collective with the mission of collectively supporting every student to successfully complete Year 12 or its equivalent.

Rosny, together with the other teggana schools offer a wide range of subjects and programs and the flexibility to mix these options:

- academic subjects for university entrance
- certificated vocational courses
- enrichment programs

We provide a range of student support services including:

- course counselling
- career advice and guidance
- personal counselling
- tutorials
- 'LEAP' high achievers' program
- additional support for students from rural areas, indigenous students and international students.

Our Values

Relationships:

We achieve growth and strength through partnerships and connections with our learners, their communities and the world.

Learning:

Students are engaged in positive, productive and supported learning experiences and encouraged towards lifelong learning.

Respect:

Positive interactions, with each other and with our environment, are conducted on the basis of responsibility, integrity and accountability.

Our Timetable

The 2018 college timetable is shown below as a guide. The timetable is organised in 'lines', the lines are shown in different colours to help explain how it works. You might have English on Line 1 which means you would have English first class Monday, after lunch on Wednesday and after recess on Friday. Enrichment and extension programs such as sports, short courses and tutorials normally run at lunch and after regular classes. Support group runs on Wednesdays.

	Monday	Tuesday	Wednesday	Thursday	Friday
8.30	1	4	2	5	3
10.00	Recess	Recess	Support Group	Recess	Recess
10.30	2	5	Recess	4	1
11.00			3		
12.00					
12.30	Enrichment / Tutorials	Enrichment / Tutorials		Enrichment / Tutorials	Enrichment / Tutorials
1.00		4	Enrichment / Tutorials		2
1.30	3		1	5	
2.30					
3.00					

Rights and Responsibilities

At Rosny we value, self discipline; self control; self respect; respect for others' rights, opinions and ideas; respect for others' talents, character and background as well as honesty, fairness, co-operation and dignity in the way we treat each other. Students have the right to learn and teachers have the right to teach.

We all have:

- the right to be respected
- the right to be heard
- the right to be safe at all times.

Rules and responsibilities about learning, communication, ICT, care for the environment, movement safety, privacy, and ways of settling disputes, are discussed on the students' first day.

College policies are also available from the Rosny College website: rosnyc.schoolzineplus.com

The Non-Negotiable College Rules

In order to protect the rights of all students within the campus community, there are certain expectations in terms of student behaviour. The following will not be tolerated and any such behaviour may lead to suspension or withdrawal of enrolment:

- physical or verbal abuse
- theft
- damage to campus or personal property
- possession of alcohol or illegal drugs on the campus premises
- dangerous driving of vehicles
- action that hinders the learning or wellbeing of other students.

Attendance

Tasmanian law requires students to continue with education or training until they are at least 17 years old, have completed the equivalent of a Certificate 3 qualification, or have a full-time job.

It is a requirement to attend all classes with attendance being registered for each lesson. A daily SMS alert system is used to inform parents/guardians of student absence from class. Legitimate absences must be verified either by a phone call from a parent or guardian, or a parental note presented to the Support Teacher within five days of the absence. A medical certificate is required for a prolonged absence of five days or more.

The campus attendance process is computerised. Letters will be automatically sent to students and parents in relation to unexplained absences.

If non-attendance persists, the student and parents will be asked to attend an interview. The ultimate consequence of persistent, unexplained absences could be withdrawal of enrolment.



Dates – 2018

July	Term 3	Rosny College Enrolment Guide available. This will be distributed to all feeder schools and made available online
August	Term 3 Weeks 1 -3	Rosny Staff will visit feeder high schools for subject counselling and preliminary enrolments. Contact feeder high school for dates. <ul style="list-style-type: none"> • Bayview Secondary College • Campania District High • Clarence High • Rose Bay High • Sorell School • Tasman District School • Triabunna District School
	16 August	Subject and preliminary enrolment information evening for students from non feeder and independent schools Rosny College Vocational (VET) Expression of Interest forms available from the Rosny College website.
September	7 September	On-line expression of Interest close for Vocational (VET) programs
	17 - 21 September	Suitability sessions for VET programs
Enrolments for 2019 will be on:		
December	3 December	9 am - 2 pm Clarence High
	4 December	5 pm - 7 pm Non-feeder High Schools & Independent Schools (Surnames A-L)*
	5 December	9 am - 2 pm Sorell, Campania District, Triabunna District, Bayview Secondary College
		5 pm - 7 pm Non-feeder High Schools & Independent Schools (Surnames M-Z)*
	6 December	9 am - 2 pm Rose Bay High
	14 December	Teaching staff finish
	21 December	College Office Closes
*for students new to the Department of Education on enrolment day, bring along 50 points of ID		

Dates – 2019

January	Book Sales from Monday January 7 to Saturday February 2 from Birchalls at the Show Grounds. STAS collection of items January 29 to February 1 on presentation of STAS approval letter	
	29 January	College Office Opens
		Teaching Staff Return
	31 January	Amendments to enrolments and late enrolments
Term 1	6 February (Students Begin) - 12 April	
Term 2	29 April - 5 July	
Term 3	22 July - 27 September	
Term 4	14 October - 15 November (Exams occur in November)	

Student Support

There are many people who can support and help you during your time at Rosny.

Your Support Group Teacher

You will be a member of a small Support Group which will be led by one of your subject teachers.

Your Support Group Teacher will:

- help you to settle into Rosny
- assist with any concerns you might be having
- undertake Personal Pathway Planning
- help you to find careers information
- meet with you to talk about your progress
- keep an eye on your attendance (Support Teachers receive a weekly attendance report)
- contact your parents if there are any issues or problems
- encourage you to make the most of all the opportunities available to you.

Student Services

The Student Services unit is comprised of a Youth Worker, an Aboriginal Education Worker, Counsellors and a School Psychologist. Their aim is to assist students to achieve their best educational outcomes while they are at College.

Youth Worker

Our College Youth Worker is available to work with students and families to support student access, participation and engagement at Rosny College. Working collaboratively within the Student Services Team, our Youth Worker will also have a key focus on successful student transition and the development of alternate educational programs for students. Our Youth Worker is also able to provide information on community based agencies that assist with accommodation or financial issues (i.e. Centrelink).

Aboriginal Education Worker

A staff member has particular responsibility to:

- support the development of a Personalised Learning Plan
 - provide information and support to indigenous students
 - liaise with parents/carers
- organise various activities and programs to promote culturally inclusive practices.

Counselling services

Counsellors are available in the Student Services area of the college. Students can self-refer by making an appointment within the student services area or through their support teacher. Counsellors can assist with the following:

- mental health
- transition to College
- relationship issues
- educational assistance with study skills, time management or specific learning issues which may cause barriers to learning.
- bullying and harassment
- Alcohol and other drug issues
- LGBTI support
- Financial and legal concerns
- Accommodation information
- Parent enquiries around student support

Appointments or enquiries for Student Services can be made by ringing the main office 62 449200.

School Psychologist

The school psychologist can undertake educational assessments and assists with applications for special exam considerations and is part of the College counselling team.



Students with high and additional learning needs

A team of staff have responsibility to:

- coordinate programs and services
- liaise with parents/carers and agencies
- organise programs and activities.

Students who are carers

If you have taken on the role of a carer for a family member while you are attending college, a timetable can be negotiated to try and align with your commitments.

Students from a non-English speaking background

Each year Rosny welcomes a number of students whose first language is not English. International students are always welcomed at Rosny. We have a small and friendly group of students studying a wide variety of subjects. Recent international graduates from Rosny have continued their studies at a number of institutions including prestigious universities throughout Australia as well as non-university courses both in Tasmania and other states. We offer EAL (English as an Additional Language or Dialect) to help you master the language and a number of tutorials to assist you. Support and individual assistance is provided by a counsellor and other staff. Special activities are arranged so you can learn more about the state of Tasmania and Australian culture.

Doctor and Nurse

A doctor and a nurse are on the campus twice a week. They are located in the medical room which is in the corridor between the cafe and the common room. This is a free medical service and appointments are not necessary.

Careers Information

You will be able to:

- explore and discuss your career and further education and training options with your teachers, Support Teacher and with the Careers Adviser
- access the Careers Information Centre (on level 2) for information on job availability, training courses and pre-requisites for further education and training.

Note for parents/carers

The transition to Years 11 and 12 can be daunting for some students and parents/carers can help in this process. We welcome your involvement in course selection and in the enrolment of your son or daughter.



Assessment and Reporting

Reporting to parents and students

We provide a number of formal opportunities for parents to meet with the teachers during the year; however, we would also encourage parents/carers to phone the support teacher or subject teachers at any time if they have any concerns.

Reports are addressed to the students and are distributed to them. Students are expected to convey them home to their parents. Additional copies are available from the College office if required.

Meet the Support Teacher Evening

There will be an opportunity for parents to meet their son's or daughter's support teacher early in Term 1. This is an informal, social occasion.

Reports

Students will receive three reports during the college year. The first report is an interim report which will give feedback on how students have settled in to subjects and their initial progress. This will be distributed in early term one.

The second report will be distributed to students in May. This will be followed by a Parent-Teacher Evening where parents/carers will have the opportunity to discuss the progress of their son or daughter in particular subjects. An on-line booking system is used to schedule appointments for the Parent-Teacher Evening.

August Report

This is the major report for the year. It follows the mid-year assessment and examination period. This will contain assessment against criteria, exam results (if taken) and constructive comments on a student's progress and potential. This will be followed by another Parent-Teacher Evening at the college.

Website & Social Media

Information on recent news and student achievements is available from the Rosny College website:

rosnyc.schoolzineplus.com

The College also has regular updates and information available through our facebook page and twitter feed:

www.facebook.com/RosnyCollege

www.twitter.com/RosnyCollege

End of Year Results

Students in Years 11 and 12 do not receive an end-of-year report. Instead they will receive a statement of their results from the Office of Tasmanian Assessment, Standards and Certification (TASC) in December.

Newsletter

The college e-newsletter provides information on events and activities. This is produced ten times in the year and is available electronically. This will be sent to parents who have provided us with an email address and is also available through installing the Schoolzine app, and subscribing to Rosny College.



Enrolment and Courses

In Year 10 you will have worked on your Transition Plan to assist with your subject choices for Year 11. In addition, Rosny provides course counselling services before and on the enrolment days.

If you are planning to go to university after Year 12, then look at the listing of Office of Tasmanian Assessment, Standards and Certification (TASC) level 3 and 4 (pre-tertiary) subjects. In most subject areas there are courses that you can take in Year 11 that will provide a good foundation for pre-tertiary study in Year 12. Ask about these during course counselling or at enrolment.

If you would like to gain an apprenticeship, a traineeship or full-time work, then you should consider enrolling in a vocational program and a range of complementary subjects.

If you are unsure of your options after Year 12, you should also ask yourself the following questions:

- What subjects have I enjoyed the most at school?
- What activities do I enjoy the most outside of school?
- What are my plans for after Year 12?
 - » Full-time work
 - » Apprenticeship or traineeship
 - » A training course then work
 - » University
 - » Other

The following websites may help your choice of career, training and job opportunities:

- www.myfuture.edu.au which is a Department of Education, Employment and Workplace Relations site that has information about careers, further training and job opportunities.
- www.youth.gov.au which is an Australian Youth Forum operated by the Federal Government.
- www.joboutlook.gov.au which includes hundreds of occupational profiles.

You can also refer to the publication Course Information Handbook for Years 11 and 12 which will be available online.

www.education.tas.gov.au/students/school-and-colleges/years-11-12

Course counselling on and before Enrolment Day

Rosny staff visit eastern shore government high schools during the year through our liaison program. Individual course counselling is provided to Year 10 students in these feeder high schools. Students who attend other high schools and who need advice on courses may contact Rosny on (03) 6244 9200.

On Enrolment Day

Full course counselling services will be available on enrolment days in December. Parents are encouraged to attend.

You should allow plenty of time (about 2 hours) on this day to talk about your course with subject teachers. You will need to complete an enrolment form and have an ID photo taken.

Counselling for students with special and additional needs

A personalised learning program is developed for each student. The College provides a range of options for students with special and/or additional needs, including the Springboard program.

Course counselling for Year 11s

Course counselling and enrolments for Year 11s into Year 12 courses will occur in Term 3, 2018. You will have worked on refining your pathway plan with your support teacher during the year. Additionally the Careers Expo is geared to help you with your career and subject choices. Continue to discuss your choices with your support teacher, your subject teachers, the careers counsellor and your cluster leader.

Study Loads

For Years 11 and 12, the recommended minimum study load at Rosny is 600 hours. Note: Students below 600 hours may not be eligible for Youth Allowance. All students will also be enrolled in a student support group. In addition, students may enrol in one or more of the short courses which provide extension, enrichment or recreation.

Length of courses

The letter A, B or C indicates the length of the course. C subjects are 150 hours in length or 4.5 hours per week. These subjects have three sessions a week. B subjects are 100 hours in length or 3 hours per week. In these subjects there are two sessions a week. The short A courses vary in length. However, usually you will attend one session a week. Some short courses run for half a year.

Subject Levels

TASC subjects are organised into levels of difficulty – levels 1, 2, 3 and 4. Level 3 and 4 subjects are also known as pre-tertiary or university entrance subjects.

Vocational Education and Training Programs

The Vocational Education and Training (VET) programs range from Certificate I to Certificate IV. VET programs, sometimes known as Certificate Programs, vary in number of hours per week. See our full listing at the back of the Enrolment Guide. The timetable is organised to enable students to study TASC subjects as well as VET. At Rosny some qualifications are also packaged with TASC courses.

Tutorials, Extension and Enrichment Short Courses

Tutorials are also offered in a range of subjects to support the academic program. The extension and enrichment short courses vary in length but usually you will attend one session per week. Some short courses run for a term. Students are encouraged to enrol in one or more short courses in addition to their core program. These courses provide opportunities to develop new skills and interests, maintain a healthy lifestyle or support your academic learning in specific subject areas. In some cases the courses can also earn points toward the Tasmanian Certificate of Education.

Alternate Programs

BoostEd

BoostED is a college program designed to offer a pathway for students who have had significant challenges in meeting the demands of school life. Students may have been disengaged from school life for significant periods, and be in need of help to maintain their connection to schooling. Through the combination of pre-selected subjects and individual choice, the aim is to develop social skills and well-being, as well as literacy, numeracy and ICT skills. Pre-selected subjects include a combination of Essential Skills Reading and Writing, Essential Skills Numeracy, Personal Health and Wellbeing, Computing Business, and Building Connections. Students will be able to select 1 or 2 other subjects.

Participation in this program will usually result from nomination by high school staff and with active consultation with the student.

Industry Pathway Program (I.P.P.)

The Industry Pathway Program (IPP) is for students who are interested in combining vocational learning with a paid school-based apprenticeship whilst completing their TCE. IPP builds a student's career path with courses in Work Readiness and Personal Pathway Planning. Integrated work placements provide industry experience and opportunity to secure a school-based apprenticeship. Project-based learning in Maths, English, Business and Computing provides knowledge for students embarking on work and future careers.

This is a combined initiative of the Clarence and Rose Bay High schools within the Teggana Collective.

The Tasmanian Certificate of Education

The Tasmanian Certificate of Education (TCE), issued by the Office of Tasmanian Assessment, Standards and Certification (TASC) is an important qualification for students to attain at the end of Year 12.

If you are in Year 10 in 2018 you should plan your study program so that you can gain this qualification over Years 11 and 12. The TCE will only be issued to students who meet its requirements.

How do you qualify?

The Tasmanian Certificate of Education (TCE) is a qualification that has five standards.

You will need to:

- complete a full program of study as part of your senior secondary education and training (participation and achievement)
- meet the requirements for everyday adult reading, writing and communication (literacy skills)
- meet the requirements for everyday adult maths (numeracy skills)
- meet the requirements for everyday adult use of computers and the internet (ICT skills)
- develop and review plans for your future (pathway planning).

Participation and Achievement

You need to gain at least 120 credit points, with 80 at Level 2 (or above) in order to qualify for the TCE. VET programs and TASC subjects all contribute credit points to the TCE. Each TASC subject and VET program has designated credit points. These are identified in the subject information grid. There are also other courses and programs that contribute credit points e.g. AMEB music, Queen's Scout and Guide awards, CISCO. See the TASC website for further details.

To gain the TCE over Years 11 and 12, you will need to enrol in, and complete to a satisfactory level, a minimum of four 'C' subjects (or the equivalent) in each year. When you enrol, staff will help you calculate your credit points.

Literacy, Numeracy and ICT Skills

In order to gain the TCE, you will need to demonstrate that you have met basic standards in these areas in Years 11 and 12. Most students will do this through successful completion of appropriate subjects and programs. When you enrol, our counsellors will assist you to choose subjects or short courses that enable you to meet these requirements.

Pathway Planning

During Year 10 you will have developed a Transition Plan. During Year 11 you will need to review plans for your future education, work or training. It is expected that students will meet this requirement by actively participating in the Support Group program at Rosny.

Working it all out

When you enrol, counsellors will help you with your subject choice so that you can gain this qualification.

Qualifications Certificate

At the completion of your studies, you will be issued with a Qualifications Certificate by the Office of Tasmanian Assessment, Standards and Certification (TASC). This will list all the TASC subjects and vocational programs that you have successfully completed in Years 11 and 12, whether you have met the requirements of the TCE or not.

Tasmanian Certificate of Educational Achievement

The Tasmanian Certificate of Educational Achievement (TCEA) is a descriptive certificate which will be issued to a small number of students who meet the eligibility criteria. It will most commonly apply in situations where personal circumstances, disability, illness or impairment mean that only a narrative certificate will adequately describe the student's achievements.

More information is available on the TASC website at

www.tasc.tas.gov.au



Pre-Tertiary Subjects

University Entrance

A minimum of four TASC Level 3 or 4 subjects is required to qualify for university admission but most students study at least five over the two years to gain a good ATAR (Tertiary Ranking) score. Of these, at least three must have been gained in Year 12. It is recommended that students wishing to go to university consider studying at least two TASC Level 3 or 4 subjects in Year 11 and four TASC Level 3 or 4 subjects in Year 12.

To be eligible for the calculation of an ATAR, students will have to have met the standards for the award of the Tasmanian Certificate of Education (TCE).

Year 11 Foundation Subjects

If you do not yet have the skills and work habits, and cannot tick the boxes in the next column, you can build these skills during Year 11 by enrolling in Level 2 Foundation subjects. Foundation subjects are available in all learning areas and prepare students for study at Level 3 in Year 12.

Take the time to find out as much as you can about the subjects in which you hope to enrol. If you make careful and considered choices you are more likely to be successful in your time at college.

Enrolling In Level 3 and 4 (Pre-Tertiary) Subjects

These subjects are demanding. The following outlines what you need to consider to help you make appropriate and realistic selections.

It is recommended that you have achieved an A/B in the relevant Australian Curriculum or relevant Tasmanian Curriculum area by the end of Year 10.

If you achieve a C in the Australian Curriculum you will need to check with your high school teachers and teachers at the Rosny subject desks. A positive attitude and excellent work habits may get you through in some subjects. Refer to individual subject recommendations in the subject grid for further information.

Students who are successful in Level 3 subjects:

- work hard
- ask for help, including attending tutorials
- are prepared to do homework
- take care in the presentation of their work
- are prepared to catch up on any work missed.

Assistance with your studies

Tutorials are available during the year in most subjects: some are held at lunch-times, some after school, some just before exams

- they provide one-to-one assistance from subject teachers
- they help you to keep on top of your subjects and to enjoy your studies
- you can attend regularly or only when you have a specific problem.

Ask yourself: Do I meet the following expectations?

- ☐ *I have a regular pattern of attendance* (this ensures that you will cover the topics in depth and will not have missed key learning).
- ☐ *I am prepared to do a considerable amount of homework* (you may need to do two to three hours of homework each week for each subject).
- ☐ *I understand that many Level 3 subjects have a substantial reading and writing component*

You will need to:

- be prepared to read a range of texts for information
- have a reasonable level of accuracy (spelling, punctuation, grammar, etc.)
- be prepared to write extended answers.
- ☐ *I am comfortable with presentations and group work as these form part of assessments in many Level 3 subjects.*
- ☐ *I realise that most of these subjects have exams.* The exams are two to three hours long and are mostly hand written.
- ☐ *I am able to manage my time and workload.* You may need to juggle the demands of your college subjects with part-time work, sport and other interests, as well as allowing time with family and friends.
- ☐ *I am able to meet deadlines.* The Office of Tasmanian Assessment, Standards and Certification (TASC) sets deadlines for some assignments and folios and these are not negotiable.

The Learning and Enhancing Academic Potential (LEAP) Program

LEAP is an extra ordinary educational opportunity that provides appropriate academic planning, support and follow-ups that sustain student academic success. It is an excellent option for any student seeking some structure and personal support.

The aim of LEAP is to empower students to be the best students they can be and to mentor and support students to enhance their academic potential and become globally social aware citizens.

In this program you will:

- be part of a dedicated LEAP Support Group with fellow students
- have access to extra assistance with study tips, time management and exam preparation
- discover a range of scholarships on offer.

Vocational Education and Training (VET) Programs

Vocational Education and Training (VET) Programs

Vocational programs enable students to begin their industry training at the College. Many of these courses involve work placements which use on-the-job training. Students who satisfactorily complete these courses will gain nationally recognised qualifications. On completion, students may gain employment or an apprenticeship or continue with higher level courses at another registered training organisation.

Note: In some programs part or all of the course may be undertaken at another campus.

The discussion/interview process at Rosny College

For selection into most VET programs you attend a discussion/ interview with the coordinator of the VET program. The discussion is used to determine your suitability for the program.

You will be prompted to book a date/time for your discussion/interview.

At the discussion/interview the VET Coordinator will get to know you by asking you questions about yourself, your hobbies and any employment you may have undertaken. They will ask you questions like:

- “Why are you interested in this qualification?”
- “Do you have any sport or employment commitments?”
- “Did you bring your résumé?”
- “Have you had any experience in this field?”

Remember, there are no right or wrong answers to these questions; be yourself and answer them honestly. Preparation for this could be to find out some information on the Industry that you are applying for.

Vocational programs enable students to begin their industry training at the College. Many of these courses involve work placements which use on-the-job training. Students who satisfactorily complete these courses will gain nationally recognised qualifications. On completion, students may gain employment or an apprenticeship or continue with higher level courses at another registered training organisation. Note: In some programs part or all of the course may be undertaken at another campus.

Australian School Based Apprenticeships (ASbA)

If you are currently on a School Based Traineeship, please remember you are required to notify all parties concerned regarding your change of school. At enrolment time, also inform Rosny staff that you are on a School Based Traineeship.

Note: VET programs do not contribute to the Australian Tertiary Admission Rank (ATAR).

VET Applications Timeline

Event	Date
Online Expression of Interest opens	Thursday 16 August
Suitability sessions for VET programs	Monday 17 September – Friday 21 September
Letter regarding your place in a VET program	November
Finalise enrolment at Rosny College	3 – 6 December

Links with the University of Tasmania

Rosny College has close links with the University of Tasmania. Our students have the opportunity to participate in a range of programs and activities with the University including:

- University Connections Program, where Rosny students can undertake university subjects while studying for their TCE in areas such as languages, creative arts, music and more
- UTAS High Achiever Program
- Course and scholarship information sessions

More information can be found at the University of Tasmania website: tas.edu.au/access-participation-and-partnerships/ucp

UTAS Connections Program (UCP)

Students can gain university accreditation for courses either through extension programs, including French, Accounting, Japanese and Legal Studies or Performance Project units. UTAS Connections Program offerings at Rosny for 2019 are in the following areas; Asian Studies, French and Japanese, Accounting and Financial Decision Making, Music and Object Design. These units may be counted towards your Tasmanian Certificate of Education (TCE) and Australian Tertiary Admission Rank (ATAR). For more information on unit descriptions, learning objectives, admission requirements, teaching pattern, TCE/ATAR and teaching staff go to: www.utas.edu.au/accessparticipation-and-partnerships/ucp

University of Tasmania High Achievers Program

To be eligible for the program, students need to demonstrate very high levels of academic performance. As an example, you would normally be expected to be enrolled in Year 12 and have completed three or more Level 3 subjects in Year 11, with exemplary achievements as well as the maturity to balance university experience with college.

High Achiever Program units may contribute towards the calculation of the Australian Tertiary Admissions Rank (ATAR).

High Achiever Program

Units are available at the University of Tasmania (Hobart Campus) in the faculties listed below:

- Arts
- Business and Economics
- Science, Engineering and Technology
- Law
- Health

Interested students should visit www.utas.edu.au/accessparticipation-and-partnerships/ucp for details of individual units, including location, timetables and any pre-requisite subjects.

Other universities

Students intending to apply for entry into mainland universities should check the relevant websites and handbooks. A pre-tertiary (TASC Level 3) English is compulsory for entrance into some mainland universities. Be aware that there may be different prerequisites for entry into other universities. Our staff will assist you in this process.

Useful Websites

General information about University of Tasmania:

www.futurestudents.utas.edu.au

Information about other Australian universities:

www.universitiesaustralia.edu.au



Explanation of Subject Grids

Subject Groupings

Each Learning Area has a grid which indicates;

- recommended prerequisites,
- length of course
- how the subject meets the requirements of the Tasmanian Certificate of Education (TCE).

Explanation of the Subject Grids

The information in the grids will help you plan how to qualify for the Tasmanian Certificate of Education (TCE). The listings show you which subjects enable you to meet the literacy, numeracy and ICT requirements of the TCE as well as the number of credit points towards the TCE.

The pre-tertiary (Level 3 and 4) subjects are shown in blue shading. Pre-tertiary subjects are used to gain university entrance.

VET qualifications are shown in green.

The column 'Recommended Prior Study' refers to the Australian Curriculum (A-E) or TASC Year 11 subjects' awards (SA, CA etc).

The Campus column indicates which teggana site will offer that subject for study in 2019.

Where Rosny offers additional subjects, more details are provided at the bottom of the relevant section.

Literacy, Numeracy and ICT Skills.
These columns indicate whether the subject enables you to meet the requirements for TCE Literacy, Numeracy or ICT.

This column indicates which teggana site will offer this subject for study in 2019

Subject	Level	Hours	CP	LIT	NUM	ICT	Recommended Prior Study	Campus
Workplace Mathematics	2	150	15		✓		D/E Mathematics	Rosny, Bayview, Sorell
Psychology	3	150	15	✓		✓	A/B (or C*) English	Rosny
Cert II in Business	2	300	30				No entry requirements	Rosny

*in consultation with teachers

This column indicates the subject's level. Note that only level 3, 4 & UTAS subjects count towards your university entrance. These subjects are shown with blue shading.

The recommended study load at Rosny is a total of 600 subject hours per year.

This column indicates the number of Credit Points gained by successfully completing the subject. (120 points are required over two years, 80 of which must be in a level 2 or 3 subject)

Behavioural Studies

Subject	Level	Hours	CP	LIT	NUM	ICT	Recommended Prior Study	Campus
Working with Children	2	150	15				No entry requirements	Rosny, Sorell
Introduction to Sociology and Psychology	2	150	15	✓			C/D* English	Rosny, Bayview, Sorell
Psychology	3	150	15	✓		✓	A/B (or C*) English	Rosny
Sociology	3	150	15	✓		✓	A/B (or C*) English	Rosny
Cert II in Community Services (focus on Aged Care and Disability Care)	2	300	30				No entry requirements	Rosny
Cert II in Community Services (focus on Children's Services)	2	300	30				No entry requirements	Rosny
Introduction to Nursing (Cert III in Health Services Assistant)	3	300	30				C in English or Cert II in Community Services	Bayview

Working with Children 2C

Working with Children is designed to equip learners with a broad set of practical skills, attitudes and essential knowledge centred on working with and caring for children in a wide range of contexts. The compulsory Practical Component is designed to provide experience in the child care environment as well as provide opportunities to apply acquired knowledge and develop practical understanding of the theoretical underpinnings of child development. Please note a Working with Vulnerable People card is required for this course

Introduction to Sociology and Psychology 2C

Introduction to Sociology and Psychology uses an interdisciplinary approach through which learners develop an understanding of themselves and other individuals, groups and institutions within society and across cultures. It explores common human experiences and the interaction between motivation and behaviour. Through evidence based research and using the lenses of sociology and psychology, learners are encouraged to ask critical questions about social phenomena.

Psychology 3C

Psychology provides an understanding of human behaviour and experiences of the individual. Through studying the individual differences, psychobiological processes, human learning and remembering learners develop an understanding of the basic concepts and techniques of psychology, and the relationship between thoughts, feelings and behaviour, and how these are underpinned by environmental and biological factors.



Sociology 3C

Sociology is about understanding and interpreting society and the people within it. Theories are applied to a range of social issues to understand why patterns exist, why problems have occurred (e.g. crime), and how they might be dealt with. It examines issues such as those related to inequality, power, culture and identity and investigates how these are changing in contemporary Australian society.

Certificate II Aged Care / Disability Care

Aged Care and Disability Care can be rewarding and a positive career path. As the population ages, there are a growing number of career opportunities in Aged Care for those who have the skills and desire to work in this area.

Cert II in Community Services (focus on Children's Services)

This VET program focuses on developing skills required for working in the early childhood education and care sector. Students learn about how to stay safe and healthy in the workplace, the importance of children's play, health and development, basic administration tasks and gain a first aid certificate. Please note a Working with Vulnerable People card is required for this course

Cert III Introduction to Nursing (Health Services Assistant)

The Introduction to Nursing course provides students with an opportunity to learn about body systems, infection control and hygiene, medical terminology, first aid, communication in health services and work health and safety through participation in theory and practical classes along with work placements.



Business Studies

Subject	Level	Hours	CP	LIT	NUM	ICT	Recommended Prior Study	Campus
Business Studies Foundation	2	150	15				C/D* English and Mathematics	Rosny
Accounting	3	150	15		✓		A/B (or C*) English and Mathematics	Rosny
Business Studies	3	150	15				A/B (or C*) English and Mathematics	Rosny
Economics	3	150	15	✓			A/B (or C*) English and Mathematics	Rosny
Cert II in Business	2	300	30				No entry requirements	Rosny

Business Studies Foundation 2C

This subject enables learners to gain an understanding of small business and enterprise. The course develops the knowledge, understanding and skills that will inform learners about the small business environment in Australia and encourages them to participate in, and contribute to, it.

Accounting 3C

Accounting aims to make students financially literate by creating an understanding of the systems and processes through which financial practices and decision-making are carried out, as well as the ethical, social and regulatory issues involved.

Business Studies 3C

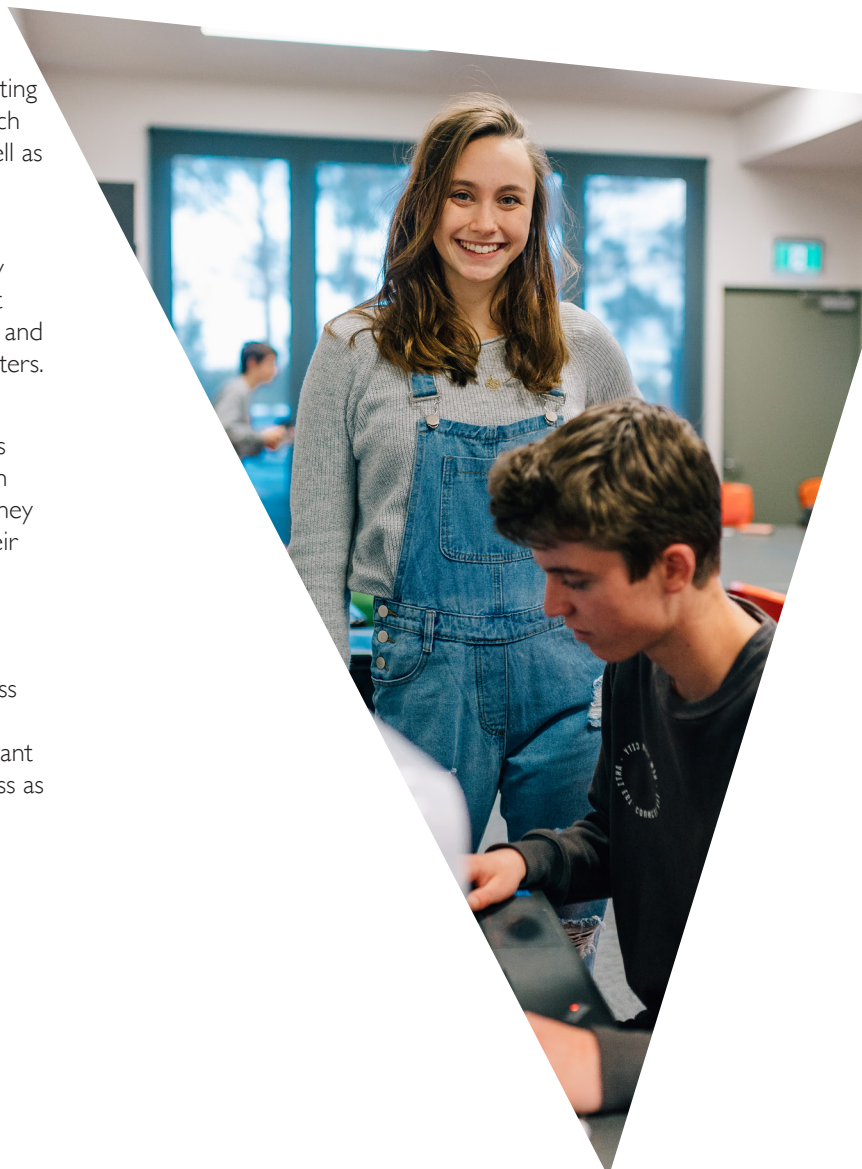
In this pre-tertiary subject, students develop business literacy skills which enhance their ability to appreciate the issues that face businesses and stakeholders in a rapidly changing world and to make informed and rational decisions about business matters.

Economics 3C

This subject investigates how individuals, groups and societies use scarce resources in the best possible way. Students learn how economic events and issues affect their lives and how they can use the knowledge and skills of economics to inform their participation in society. Students gain a knowledge of events currently happening in the Australian economy.

Cert II in Business

This course teaches the foundation skills required for business and office administration. Students will study business communication skills; work health and safety processes; relevant computer programs to assist in the daily running of a business as well as environmentally sustainable work practices.



English

Subject	Level	Hours	CP	LIT	NUM	ICT	Recommended Prior Study	Campus
Essential Skills - Reading and Writing	2	100	10	✓			No entry requirements	Rosny
English as an Additional Language or Dialect	2	150	15				No entry requirements	Rosny
English Applied	2	150	15	✓			C/D English	Rosny, Bayview, Sorell
English Foundations	2	150	15	✓			C English	Rosny, Bayview, Sorell
English 3	3	150	15	✓			A (or B*) English or CA in English Foundation	Rosny
English Literature	3	150	15	✓		✓	A/B (or C*) English	Rosny
English Writing	3	150	15	✓		✓	A/B (or C*) English	Rosny
English as an Additional Language or Dialect	3	150	15	✓			No entry requirements	Rosny

English as an Additional Language or Dialect 2C

English as an Additional Language or Dialect 2C is designed for learners who need to consolidate and refine their Standard Australian English language skills for effective communication in a range of contexts.

English Applied 2C

English Applied is designed to consolidate and refine the skills and knowledge needed by learners to become confident, competent and engaged users of English in many contexts including everyday individual, community, and workplace contexts. This course will develop learners' language and literacy skills to enable them to communicate successfully, both orally and in writing.

English Foundations 2C

English Foundations focuses on developing learners' analytical, creative and critical thinking and communication skills in all language modes. It encourages learners to engage with texts from their contemporary world and with texts from Australian and other cultures.

English 3C

English is a study of contemporary language, literacy, media and literature. It is designed to develop learners' analytical, creative, critical thinking and communication skills in all language modes. Through close study and wide reading, viewing and listening, learners engage critically and imaginatively with contemporary non-literary and literary texts.

English Literature 3C

English Literature focuses on the study of literary texts. Learners establish and articulate their views through creative response and logical argument. They reflect on qualities of literary texts, appreciate the power of language and inquire into the relationships between personal preference and texts, authors, audiences and contexts as they explore ideas, concepts, attitudes and values.

English Writing 3C

English Writing aims to develop students' skills in the exploration of ideas through writing. Students investigate texts and create their own, producing a significant body of original work. Emphasis is given to developing skills in crafting writing, both through workshop processes and through investigation of other writers' approaches.

English as an Additional Language or Dialect 3C

English as an Additional Language or Dialect 3C focuses on language learning and the explicit teaching of the structure, linguistic features and sociolinguistic and sociocultural aspects of Standard Australian English. This course develops learners' academic English skills in order to prepare them for tertiary study.



Health, Physical and Outdoor Education

Subject	Level	Hours	CP	LIT	NUM	ICT	Recommended Prior Study	Campus
Community Sport and Recreation (Men)	2	150	15				No entry requirements	Rosny, Bayview
Community Sport and Recreation (Women)	2	150	15				No entry requirements	Rosny, Bayview
Athlete Development	2	150	15				Currently training under the supervision of a qualified coach	Rosny, Bayview
Athlete Development (AFL Men)	2	150	15				Currently training under the supervision of a qualified coach	Rosny
Athlete Development (AFL Women)	2	150	15				Currently training under the supervision of a qualified coach	Rosny, Clarence
Athlete Development (Basketball)	2	150	15				Currently training under the supervision of a qualified coach	Rosny
Athlete Development (Soccer)	2	150	15				Currently training under the supervision of a qualified coach	Rosny
Outdoor Education (Adventure Recreation)	2	150	15				No entry requirements	Rosny
Outdoor Education (Expedition)	2	150	15				No entry requirements	Rosny
Personal Health and Wellbeing	2	150	15				No entry requirements	Rosny, Bayview, Sorell
Sport Science Foundation	2	150	15				No entry requirements	Rosny, Bayview
Sport Science	3	150	15				A/B (or C*) English or CA in English Foundation or Sports Science Foundation	Rosny
Outdoor Leadership	3	150	15	✓			Experience in Outdoor Education	Rosny
Health Studies	3	150	15	✓			A/B (or C*) English or CA in English Foundation or Personal Health and Wellbeing	Rosny
Introduction to Maritime Operations	1	200	15				No entry requirements	Rosny
Cert II in Sport and Recreation	2	300	30				No entry requirements	Rosny
Cert II in Outdoor Recreation	2	300	30				No entry requirements	Rosny
Cert II in Salon Assistant	2	300	30				No entry requirements	Bayview
Cert II in Retail Cosmetics	2	300	30				No entry requirements	Rosny
Cert III in Aquatics and Community Recreation (SoA)	3	300	30				No entry requirements	Rosny



Community Sport & Reaction 2C

Students studying Physical Recreation will develop physical sport and recreation skills, knowledge and understanding of health and fitness concepts, and the capacity to work constructively with others. This subject has both practical and theoretical components.

Athlete Development 2C

Athlete Development focuses on sports specific learning. The course prepares students with the necessary critical elements leading to an improvement in their chosen sport, emphasising technical development, physical preparation and sports specific knowledge. At Rosny College, students can opt to specialise in the sports of Basketball, Soccer or Australian Rules Football, or enrol in a class with mixed activities.

Outdoor Education 2C

Outdoor Education is designed to foster the development of independence and self-sufficiency within the context of outdoor recreational activities. Skills and knowledge will be developed through theoretical learning and experiences in a range of outdoor activities.

Personal Health and Wellbeing 2C

Personal Health and Wellbeing has been developed for students seeking to improve their personal fitness, increase their self-awareness and broaden their understanding of personal care, good health and wellbeing issues.

Sport Science – Foundation 2C

In Sport Science – Foundation students develop an appreciation of the importance of physical activity, sport, recreation and fitness in their lives as well as an understanding of how the body functions and the factors that influence sporting performance. This course provides opportunities to apply theory in a practical context through participating in sports and practical laboratory activities.

Sport Science 3C

Sport Science encompasses the physiological, psychological and skill acquisition components when planning and analysing human performance. This theoretical course has been designed to allow students to develop their skills, knowledge and understanding of issues related to high level athletes training and performance.

Outdoor Leadership 3C

Outdoor Leadership encourages students to develop effective leadership techniques, a positive relationship with others and the natural environment, including awareness and responsibility for its care and conservation.

Health Studies 3C

In Health Studies, students will learn about and investigate health in the context of personal health, Australian health and global health. This approach is a continuum of learning where students will develop the knowledge, skills and understanding enabling a global perspective of health.

VET Maritime Operations

VET Maritime covers boat handling, safe work practices,

maritime rules and regulations, emergency survival and firefighting, navigation and radio communications; through a combination of both theory and practical sessions on the Derwent River.

Certificate II in Sport and Recreation

This qualification allows individuals to develop knowledge and skills for work in the recreation industry. In this certificate, students do coaching and officiating courses, first aid training and a sports injury management course. Work placement is provided with sport and recreation facilities, leisure and aquatic centres, fitness centres, sports clubs and local primary schools, assisting physical education teachers. Students need to be willing to do administrative tasks as well as practical activities.

Certificate II in Outdoor Recreation

This qualification provides the skills and knowledge for an individual to be competent in performing core skills in outdoor recreation environments and assisting with the conduct of a range of outdoor activities. Work may be done as part of a team and will be performed under supervision in field locations as camps or indoor recreation facilities. This course involves activities using diverse range of equipment in low land, mountainous and water environments.

Certificate II in Salon Assistant

This qualification reflects the role of individuals who work as salon assistants and competent in communicating in the workplace, interacting with and providing service to clients and assistance to colleagues. They perform routine functions under direct supervision as part of a hairdressing team.

Certificate II in Retail Cosmetics

Looking for a career in Retail or a pathway to Beauty therapy? Come and experience Rosny Beauty Lounge. Our course is two full days a week. We have two theory and one practical session per day.

Certificate III in Aquatics and Community Recreation

This course enables students to do AUSTSWIM training to become a teacher of Swimming and Water Safety. Four units are presented through theory and practical sessions: Perform basic water rescues, Instruct water familiarisation, buoyancy and mobility skills, Instruct clients in water safety and survival skills and Instruct swimming strokes. Students then go on to spend time at a local pool with qualified teachers working with learn to swim programs, to complete their qualification.



Humanities and Social Sciences

Subject	Level	Hours	CP	LIT	NUM	ICT	Recommended Prior Study	Campus
History and the Environment	2	150	15	✓			C or D in English	Rosny
Legal Studies Foundation	2	150	15	✓			C English	Rosny
Ancient History	3	150	15	✓			A/B (or C*) in English	Rosny
Legal Studies	3	150	15	✓			A/B (or C*) English	Rosny
Modern History	3	150	15	✓			A/B (or C*) in English	Rosny
Philosophy	3	150	15	✓			A/B (or C*) in English	Rosny
Geography	3	150	15	✓			A/B (or C*) in English	Rosny
Asian Studies (University Connections Program)	3	150	15				CA in English 3C with concurrent study of Level 3 subjects	Rosny
Introduction to Tourism (Cert II in Tourism - SoA)	2	150	15				No entry requirements	Rosny
Cert II in Tourism	2	300	30				No entry requirements	Rosny
Cert III in Tourism	3	300	30				Certificate II in Tourism	Rosny



History and the Environment 2C

This course enables learners to study ways that human activity has impacted our environment. Learners will examine how historical factors in ancient China, India and Australia have shaped their world. Through a focus on both the ancient and recent past, the course allows learners to examine case studies on threatened species and modernisation in Asia.

Legal Studies – Foundation 2C

Legal Studies - Foundation provides learners with knowledge and understanding of the Australian legal system and extends their skills of research, investigation, data use and analysis, critical thinking and applied learning. The course will support learners to apply knowledge and skills to real world issues and ideas.

Ancient History 3C

Ancient History enables learners to study life in an early civilisation based on the analysis and interpretation of physical and written remains. It shows how the world and its people have changed, as well as the significant legacies that exist into the present while providing context for this interconnectedness of past and present.

Legal Studies 3C

Legal Studies gives learners core knowledge and equips them to describe and assess essential principles, features and institutions of our legal and political systems including how they operate locally, nationally and in an international context. The course promotes understanding of the dynamic nature of Australia's liberal democracy, its interactive processes, and the pursuit of equity and justice under the rule of law.

Modern History 3C

This Modern History course enables learners to study the forces that have shaped today's world and provides them with a broader and deeper comprehension of the world in which they live. The focus is on the 20th Century and 21st Century from the end of World War I until 2010. Learners are encouraged to make connections with the changing world to the present.

Philosophy 3C

Learners will use philosophical methods of inquiry including critical thinking skills in order to investigate philosophical ideas, issues and positions. These will include what does it mean to live a 'good life', processes involved in ethical decision making and what is meant by the concept of a 'mind'.

Geography 3C

Geography provides a contemporary framework to investigate and analyse a range of challenges and associated opportunities facing Australia and the global community. These challenges include rapid change in biophysical environments, the sustainability of places, dealing with environmental risks and the consequences of international integration.

Asian Studies - University Connections Program

Students learn about modern Asia by exploring the societies, religions, youth culture, pop culture, education and food of Asia. Explore the diversity of Asia and discover the fascinating range of ethnicities and differences in lifestyles. In addition to contributing to TCE and ATAR scores, successful completion of Asian Studies TCE provides credit towards a University of Tasmania course.

Introduction to Tourism (Cert II in Tourism - SoA)

This course gives students the opportunity to gain a basic understanding of the tourism industry. Areas of study include Eco-tourism, adventure tourism and heritage tourism on a local, national and global scale.

Cert II/III in Tourism

This course provides students with the skills and knowledge required for work within the tourism industry. Course work covers a range of industry sectors including retail travel, tour operators, tour wholesalers, attractions, cultural and heritage sites and small business.



Information Technology

Subject	Level	Hours	CP	LIT	NUM	ICT	Recommended Prior Study	Campus
Computing (Business)	2	150	15			✓	No entry requirements	Rosny
Computing (Multimedia)	2	150	15			✓	No entry requirements	Rosny
Computer Science	3	150	15			✓	C Mathematics	Rosny
Information Systems and Digital technologies	3	150	15			✓	A/B (C*) in English or CA Foundation English	Rosny

Computing (Business)

This subject involved the skills important to using information technology in the office, study and personal life.

Computing (Multimedia)

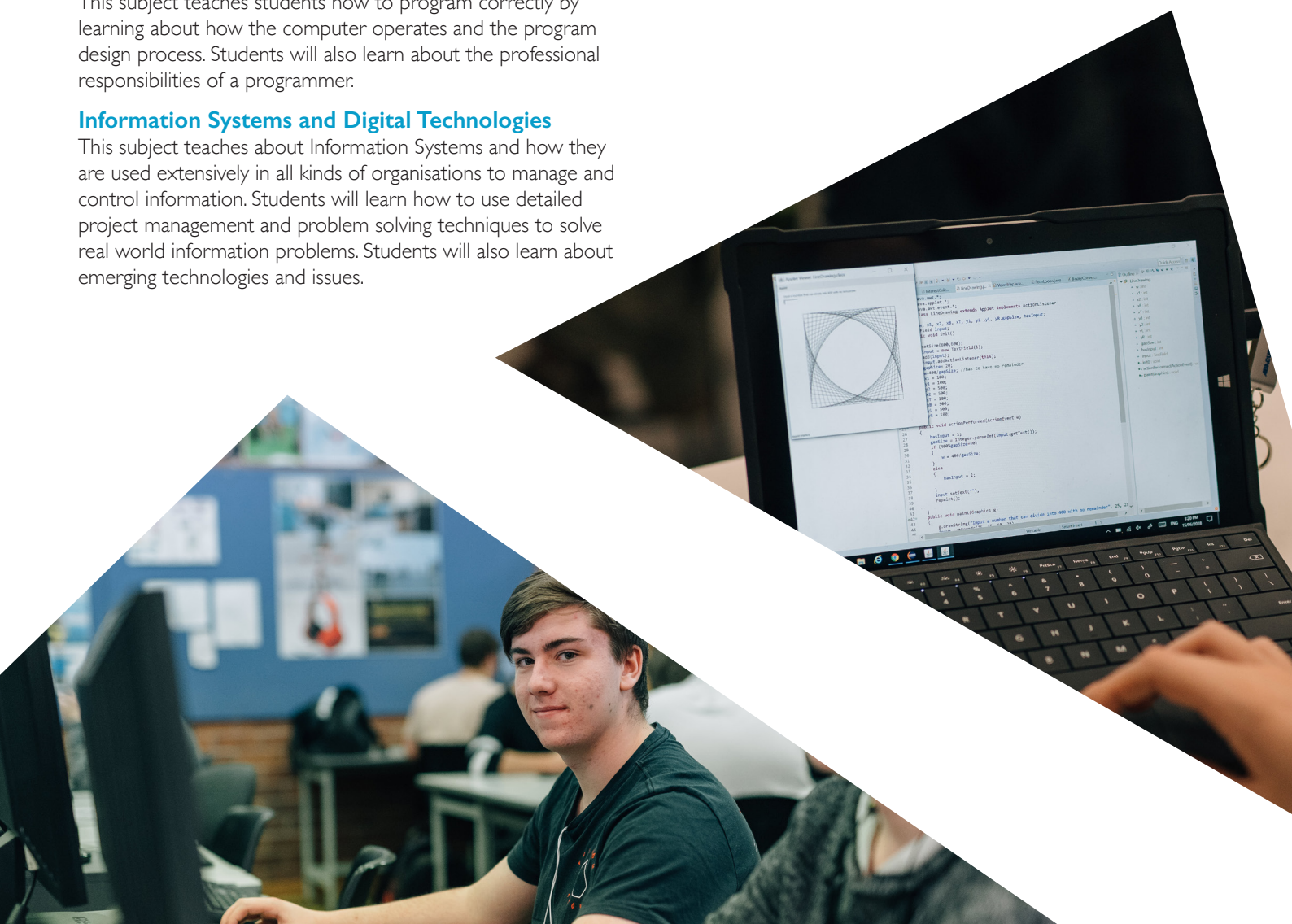
This subject reinforces students' Microsoft Office software knowledge and develops students' knowledge of Adobe software. The subject focuses on web design, image editing and video editing.

Computer Science

This subject teaches students how to program correctly by learning about how the computer operates and the program design process. Students will also learn about the professional responsibilities of a programmer.

Information Systems and Digital Technologies

This subject teaches about Information Systems and how they are used extensively in all kinds of organisations to manage and control information. Students will learn how to use detailed project management and problem solving techniques to solve real world information problems. Students will also learn about emerging technologies and issues.



Languages

Subject	Level	Hours	CP	LIT	NUM	ICT	Recommended Prior Study	Campus
French Foundation	2	150	15				No entry requirements	Rosny
Japanese Foundation	2	150	15				No entry requirements	Rosny
French	3	150	15				French Foundation	Rosny
Japanese	3	150	15				Japanese Foundation	Rosny

French – Foundation 2C

This foundation course is designed for beginners with no experience of learning French. This course is also suitable for learners who have had some prior exposure to French and who wish to develop their skills, knowledge, and understanding of the French language and francophone culture.

Japanese – Foundation 2C

This foundation course is designed for beginners with no experience of learning Japanese. This course is also suitable for learners who have had some prior exposure to Japanese and who wish to develop their skills, knowledge, and understanding of Japanese language and culture.

French 3C

Learners will use French to communicate with others by: listening and responding to spoken French; communicating in spoken French; reading and responding to written French and expressing ideas and information in written French.

Japanese 3C

Learners will use Japanese to communicate with others by: listening and responding to spoken Japanese; communicating in spoken Japanese; reading and responding to written Japanese and expressing ideas and information in written Japanese.



Mathematics

Subject	Level	Hours	CP	LIT	NUM	ICT	Recommended Prior Study	Campus
Essential Skills - Numeracy	2	100	10		✓		No entry requirement	Rosny
Workplace Maths	2	150	15		✓		D/E Mathematics	Rosny, Bayview, Sorell
General Mathematics Foundation	2	150	15		✓		C/D Mathematics	Rosny, Bayview, Sorell
General Mathematics	3	150	15		✓		A/B (C*) Mathematics	Rosny
Mathematics Methods Foundation	3	150	15		✓		A/B Mathematics	Rosny
Mathematics Methods	4	150	15		✓		Mathematics Methods 3 or A/B Mathematics 10A	Rosny
Mathematics Specialised	4	150	15		✓		Mathematics Methods 4	Rosny

Workplace Maths 2C

Workplace Maths focuses on enabling students to use maths to make informed decisions in their daily lives. The emphasis of Workplace Maths is to provide students with the mathematical knowledge, skills and understanding to solve problems in real contexts for a range of workplace, personal, further learning and community settings.

General Mathematics – Foundation 2C

Studying General Mathematics – Foundation provides the student with a breadth of mathematical experience that enables the recognition and application of mathematics to real-world situations. Learners solve applied problems of concepts and techniques drawn from the content areas of linear equations, measurement and right angle trigonometry, consumer arithmetic, matrices, graphs and networks, and univariate data analysis.

General Mathematics 3C

General Mathematics aims to develop learners' understanding of concepts and techniques drawn from number and algebra, trigonometry and world geometry, sequences, finance, networks and decision mathematics and statistics, in order to solve applied problems.

Mathematics Methods – Foundation 3C

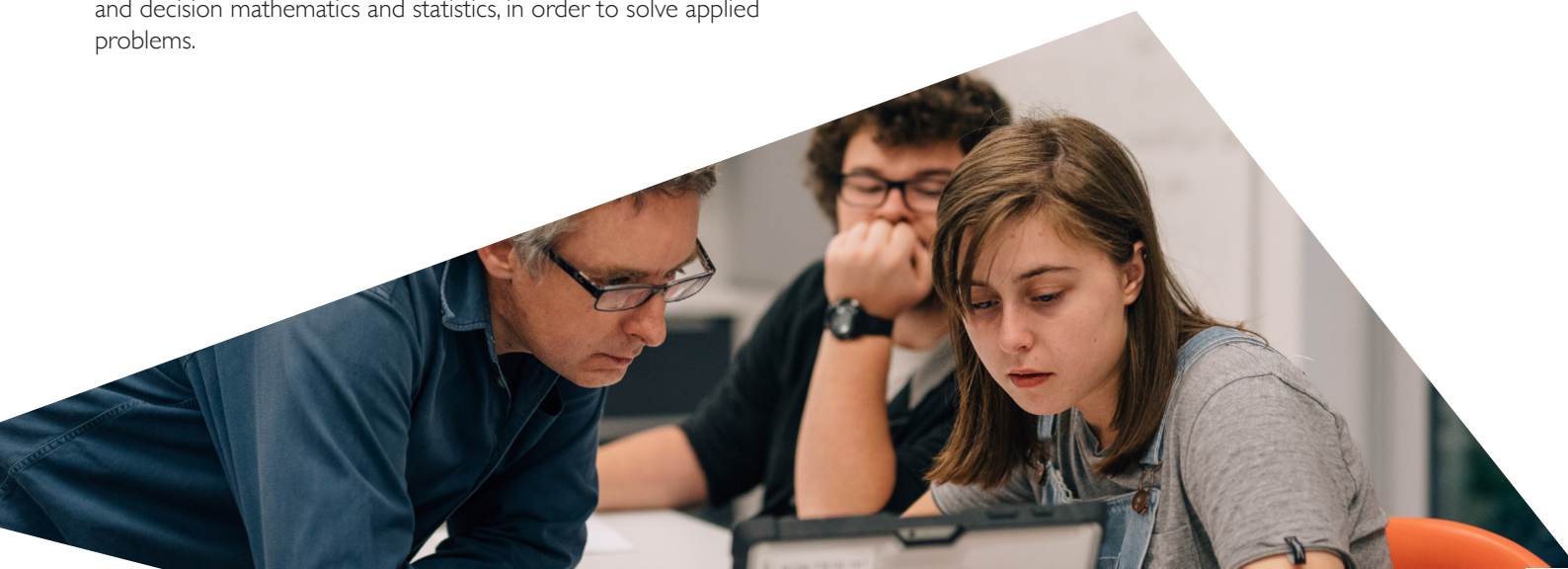
Mathematics Methods – Foundation Level 3 provides an introductory study of algebra, functions and their graphs, calculus, probability and statistics. It is designed as a preparation course for the study of Mathematics Methods Level 4 and covers assumed knowledge and skills required for that course.

Mathematics Methods 4C

Mathematics Methods Level 4 extends the study of elementary functions of a single variable to include the study of combinations of these functions, algebra, differential and integral calculus, probability and statistics and their applications in a variety of theoretical and practical contexts.

Mathematics Specialised 4C

Mathematics Specialised is designed for students with a strong interest in mathematics, including those intending to study mathematics, statistics, all sciences and associated fields, economics or engineering at university. This course provides opportunities to develop rigorous mathematical arguments and proofs, and to use mathematical models more extensively.



Have I chosen the right maths subject?

My maths course choice

☐ My high school teacher recommended this course for me

☐ I have appropriate background skills

Try the skills check below!

☐ I can make commitment to the workload required by the course

☐ My choice is consistent with my career goals

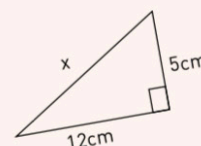
Background skills check

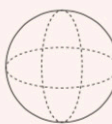
1 How many boxes would you need for 150 items if you can fit 25 in each box?

2 $352 - 28 =$

3 Remove the brackets from $3(a+2b)$

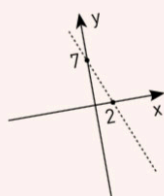
4 Use Pythagoras to find x



5 
Volume = $\frac{4}{3}\pi r^3$
Find the volume of a 2cm radius ball

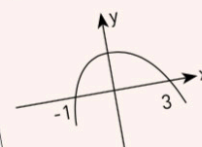
6 Find x if $3x - 3 = 5x + 17$

7 Find the gradient of the graph



8 Factorise the expression $3x^2 - ax$

9 Give a possible equation for the parabola shown



10 How many solutions does the following equation have?

$$2x^2 - 10x = -12$$

Course	You should feel confident with:	Course	You should feel confident with:
ES Numeracy	Questions 1-2	General Maths 3	Questions 3-7
Workplace Maths 2	Questions 1-2	Maths Methods Foundation 3	Questions 3-8
General Maths 2	Questions 1-4	Maths Methods 4	Questions 8-10

Mixed Fields and STEAM

Subject	Level	Hours	CP	LIT	NUM	ICT	Recommended Prior Study	Campus
Work Readiness	2	150	15	✓	✓	✓	No entry requirement	Rosny, Sorell
Engineering Design (STEAM)	2	150	15				No entry requirement	Rosny
Industry Pathway Program	2	600	60	✓	✓	✓	No entry requirement	Rose Bay & Clarence
Student Directed Inquiry (STEAM)	3	150	15	✓			Year 12 only	Rosny
Cert II in Vocational Pathways	2	150	15				No entry requirement	Rosny

Work Readiness 2C

This course will help learners plan for their future, understand themselves in relation to work, and provide them with essential skills, knowledge and understandings they require for participation in the rapidly changing world of work.

Engineering 2C (STEAM)

Engineering Design introduces learners to engineering principles and systems through an integrated Science, Technologies, Engineering, Art and Mathematics (STEAM) inquiry.

Students will apply design and creative thinking to find solutions to real-life situations with an emphasis on collaboration, communication and project based learning. Students can study units such as; sustainability, mechatronics, aerodynamics and biomedical innovations in which they will have the opportunity to engage in a variety of engineering challenges using robotics, drones, computer aided design and manufacturing (CAD/CAM) and microcomputers. Students will also have the option to compete in competitions including the FI in schools STEAM challenge.

Student Directed Inquiry 3C (STEAM Focus)

Student Directed Inquiry (SDI) STEAM is a design and inquiry approach with a STEAM focus where students will be expected to meet all TASC subject requirements including submitting an inquiry proposal based on researching technological solutions to real world problems, maintain a digital journal and portfolio, produced TedTalk style presentations, submit project plans and reports and engage with others as an active expert within both the school and global online communities. Students will have an opportunity to apply their research and understanding into the development and design cycle.

Cert II in Vocational Pathways

This course will help learners plan for their future, understand themselves in relation to work, and provide them with essential skills, knowledge and understandings they require for participation in the rapidly changing world of work.

Other STEAM Offerings

STEAM, as an approach to learning, can also be studied in another of other subject areas at Rosny College. These include:

- Art Studio Practice 3C
- Visual Art 2C
- Physical Science 2C
- Electronics 2C and 3C
- Object Design 3C
- Design and Production (Textiles) 2C
- Design and Production (Wood) 2C



Performing Arts

Subject	Level	Hours	CP	LIT	NUM	ICT	Recommended Prior Study	Campus
Contemporary Music	2	150	15				Foundation skills on their chosen instrument	Rosny
Dance	2	150	15				No entry requirement	Rosny, Bayview
Drama Foundations	2	150	15				No entry requirement	Rosny
Media Production Foundations	2	150	15			✓	No entry requirement	Rosny
Music Studies	2	150	15				Foundation skills on their chosen instrument	Rosny
Music Technology Projects – Foundation	2	150	15				No entry requirement	Rosny
Musical Theatre	2	150	15				Musical Audition Process	Rosny
Technical Theatre Production	2	150	15				No entry requirement	Rosny
Dance Choreography and Performance	3	150	15				Prior Dance training	Rosny
Drama	3	150	15	✓			A/B (C*) in English or CA in English Foundation	Rosny
Media Production	3	150	15	✓		✓	A/B (C*) in English or CA in English Foundation	Rosny
Music	3	150	15				A/B Music or Grade 4 AMEB or equivalent	Rosny
Music - Practical Study (University Connections Program)	3	150	15				A/B Music or Grade 4 AMEB or equivalent	Rosny
Music Technology Projects (University Connections Program)	3	150	15				Completing Music Technology Projects – Foundation would be an advantage	Rosny
Theatre Performance	3	150	15	✓			Year 12 only, with previous performance experience	Rosny
Certificate II in Dance	2	300	30				Prior Dance training	Bayview
Certificate II in Creative Industries (Theatre)	2	300	30				No entry requirement	Rosny
Certificate II in Creative Industries (Media)	2	150	15				No entry requirement	Rosny
Certificate III in Live Production and Services (Theatre)	3	300	30				Completion of Technical Theatre Production or Cert II in Creative Industries (Theatre)	Rosny
Certificate III in Screen and Media	3	300	30				Completion of Cert II in Screen and Media or Media 2/3	Rosny
Certificate IV in Screen and Media	4	300	30				Completion of Cert III in Screen and Media	Rosny

Contemporary Music 2C

Contemporary Music provides a vehicle for learners to engage with and create music aligned with popular culture. They acquire skills in musical creativity, performance and collaboration as well as develop an understanding of recording processes, workplace safety and marketing.

Dance 2C

Dance is a course in which students study dance making and performance skills as well as reflecting on and responding to, their own and others work. Solo and group work is a course requirement.

Drama – Foundation 2C

This course introduces learners to the foundations of drama. Learners acquire skills in collaborative processes, imaginative exploration of ideas and beliefs, and the appreciation of drama as an art form.

Media Production – Foundations 2C

This course aims to prepare learners for a future in a digital and interconnected world by providing the skills, knowledge and understandings to tell their own stories and interpret others' stories. Learners experience the languages of media communication and how a story is constructed using representations.

Music Studies 2C

Music Studies provides opportunities for learners to gain skills, knowledge and understanding by performing, creating and listening to music. Learners gain an understanding of music and musicianship, and develop as musicians through an experience based program that promotes a coherent relationship between performing music, creating music and listening to music.

Music Technology Projects – Foundation 2C

Music Technology Projects - Foundation is a course which requires students to have an interest in audio design and sound technology. There are 5 compulsory units of study: The Physics of Sound, Microphone Characteristics and Techniques, Signal Flow and System Use, Mix Aesthetics and Professional Practice.

Music Theatre 2C

Successful auditionees are required to work as a member of an ensemble in a Musical Theatre season. There are four compulsory units of study: Musical Theatre Skill Development, Ensemble Performance Skills, Understanding and Responding to text, score or music and presenting polished Musical Theatre performances.

Technical Theatre Production 2C

Technical Theatre Production requires an interest in the technical elements of theatre. Students study units in Lighting and Sound, Set and Properties, Costume and Theatrical Make-up, Stage Management, Publicity and Front of House Responsibilities. Students will have an opportunity to work on multiple productions or events.

Dance Choreography and Performance 3C

Dance Choreography and Performance is a course in which students learn the principles of composition and use these to choreograph a group and solo piece for external assessment. Critical analysis of the works of others and reflection on the students own work form the basis for the theory component and for external assessment.

Drama 3C

In this subject, learners will be provided with practical and creative opportunities to acquire drama skills, knowledge and understanding. Through a practical and theoretical study of drama, learners are exposed to a wide range of experiences and stagecraft. Learners develop an understanding of the creative and collaborative processes and skills needed to make drama works.

Media Production 3C

This production-based course is designed for learners who wish to develop technical media skills and an understanding of the contexts of journalism, advertising and narrative within media. Learners explore the media and media conventions through practical experiences and formal analysis of the media products of themselves and others. Creative and critical thinking skills are a significant component of the course.

Music 3C

Music will enable learners to develop as musicians through an experience-based program that provides opportunities to investigate the relationship between creating, listening to and performing music. Learners will engage in reflective and critical analysis in order to refine, evaluate and articulate their ideas, and to consolidate their musical practice.



Music - Practical Study 1 (University Connections Program)

Students will learn about music performance skills and notation and realization of original works; how to develop and improve level; of musicianship as well as communicating musical ideas and information.

Music - Practical Study 2 (University Connections Program)

Recommended prior completion of Music - Practical Study 1

Music Technology Projects 1 (University Connections Program)

Students will learn about creating and shaping an audio product; the tools used and skill-sets required in the audio/music technology industry; how to read, interpret and fulfill the requirements of a music technology project brief; working effectively as an individual and as a member of a project team and workplace health and safety issues relevant to the field.

Music Technology Projects 1 (University Connections Program)

Recommended prior completion of Music Technology Projects 1

Theatre Performance 3C

Working individually and as a member of a theatrical ensemble, learners present polished performances and dramatic monologues to a variety of audiences. Through class and personal research work, learners study the contexts of play scripts, as well as their language and theatrical possibilities. Live theatre performances are attended and critically analysed, with emphasis placed on the observation of individual acting performances in theatrical contexts.

Certificate II in Dance

This course is for students interested in developing their dance practice, technique and performance experiences. There is a strong focus on students experiences different dance styles with specialist mentors including ballet, hip hop, and contemporary. Students will develop their understanding of safe dance practice, contribute to project and performance planning, and have opportunities to teach small groups. Students intending to pursue a career in the performing arts are encouraged to undertake this course in order to prepare for tertiary and vocational training.

Certificate II in Creative Industries (Theatre) & Certificate III in Live Production and Services (Theatre)

You will learn about basic audio, lighting, staging, theming and various elements of production; the interaction between performers, technicians and business and providing technical support to performers, working as part of an in-house production team with industry conventions and practices.

Certificate II in Creative Industries (Media)

You will learn about camera operation and techniques, sound and lighting design and operation, production and directing techniques, scripting and editing and on-camera presentation.

Certificate III in Screen and Media & Certificate IV in Screen and Media

You will learn about the skills required for the role of a skilled operator in the film and television industries through your involvement in real-time practical work within in-house productions and from the wider community. You will produce finished products for your own folio as well as for paying clients.



Science

Subject	Level	Hours	CP	LIT	NUM	ICT	Recommended Prior Study	Campus
Life Science	2	150	15				No entry requirement	Rosny, Bayview
Physical Sciences - Foundation	2	150	15				C/D in Mathematics	Rosny, Bayview, Sorell
Agricultural Enterprise	2	150	15				No entry requirement	Sorell
Physical Sciences	3	150	15		✓		B/C in Science, Maths and English or CA in Physical Sciences Foundation	Rosny
Biology	3	150	15				A/B in Science, Maths and English	Rosny
Environmental Science and Society	3	150	15				A/B in Science, Maths and English	Rosny
Chemistry	4	150	15		✓		SA in Physical Sciences 3, Maths Methods 3/Maths General 3	Rosny
Physics	4	150	15		✓		SA in Physical Sciences 3, Maths Methods 3/Maths General 3	Rosny
Cert II in Agriculture (SoA)	2	300	30				No entry requirements	Sorell
Cert II in Animal Studies	2	300	30				No entry requirements	Sorell
Cert III in Animal Studies	3	300	30				Certificate II in Animal Studies	Sorell

Life Sciences 2C

Life Sciences is the study of the diversity of life: as it has evolved, as it functions and how it interacts with the environment. It focuses on investigations of living systems at the subcellular, cellular and organism level. Learners explore and explain everyday observations, find solutions to biological issues, and understand the processes of biological continuity and change over time.

Physical Sciences – Foundation 2C

Physical Sciences - Foundation aims to equip students with skills and knowledge in physical sciences to apply basic principles to explain observations of the properties and behaviour of matter and natural phenomena that occur in the real world.

Agricultural Enterprise 2C

Agricultural Enterprise provides learners with an introduction to agriculture and develops enterprise skills and knowledge which aid them to undertake entry level positions or to undertake further study in this field. In this course learners explore the various systems and sub-systems that support agricultural production and maximise productivity.

Physical Science 3C

In studying Physical Sciences a student has the opportunity to explore concepts, models and theories of both physics and chemistry. Physics and chemistry are fundamental sciences that provide a foundation for undertaking investigations; endeavour to explain physical and chemical phenomena that occur in the universe; and can be applied to, and have an impact on, issues in society.

Biology 3C

Biology is the study of the diversity of life as it has evolved and as it interacts and functions. Learners develop an understanding of how biological systems interact and are interrelated; the flow of matter and energy through and between these systems; and the processes by which they persist and change as well as an understanding of major biological concepts, theories and models related to biological systems at all scales, from subcellular processes to ecosystem dynamics.

Environmental Science 3C

Environmental Science and Society explores the interrelationship between the natural world and human society. Learners further develop investigative, analytical and communication skills and use scientific understandings and evidence to make informed decisions about contemporary environmental issues and their impact in society.

Chemistry 4C

Chemistry is the study of materials and substances, and the transformations they undergo through interactions and transfer of energy. Studying Chemistry provides a learner opportunity to explore key concepts, models and theories through active inquiry into phenomena and through contexts that exemplify the role of chemistry and chemists in society.

Physics 4C

Students learn how an understanding of physics is central to the identification of, and solutions to, some of the key issues facing an increasingly globalised society. They consider how physics contributes to diverse areas in contemporary life, such as engineering, renewable energy generation, communication, development of new materials, transport and vehicle safety, medical science, an understanding of climate change, and the exploration of the universe.

Certificate II in Agriculture

This course equips students with a range of practical skills and associated knowledge related to animal and plant production.

Certificate II & III in Animal Studies

These courses provide students with a range of practical skills and associated knowledge related to the animal care industry.



Technologies: Design and Technologies

Subject	Level	Hours	CP	LIT	NUM	ICT	Recommended Prior Study	Campus
Creative Projects	2	150	10				No entry requirement	Rosny
Automotive and Mechanical Technologies	2	150	15				No entry requirement	Rosny
Computing Graphics and Design - Foundation	2	150	15			✓	No entry requirements	Rosny
Design and Production (Textiles)	2	150	15				No entry requirement	Rosny
Design and Production (Composite Material)	2	150	15				No entry requirement	Rosny
Design and Production (Metal)	2	150	15				No entry requirement	Rosny
Design and Production (Wood)	2	150	15				No entry requirement	Rosny, Sorell
Electronics Foundation	2	150	15				No entry requirement	Rosny
Technical Graphics Foundation	2	150	15				No entry requirement	Rosny
Computing Graphics and Design	3	150	15			✓	B/C* English	Rosny
Electronics	3	150	15				C in Maths and Science	Rosny
Housing and Design	3	150	15			✓	B/C* in English	Rosny
Object Design (University Connections Program)	3	50	15				Design and Production (Textiles, Metal, Wood or Composite Material) or Housing and Design or Computer Graphics and Design	Rosny
Cert II in Automotive Vocational Preparation	2	450	45					Rosny
Cert II in Construction	2	600	75					Rosny, Sorell
Certificate II in Creative Industries (Design and Production)	2	300	30					Bayview
Introduction to Civil Construction (Cert II in Resource and Infrastructure Work Preparation)	2	300	30				No entry requirements	Bayview



Automotive and Mechanical Technologies 2C

Automotive and Mechanical Technologies focuses on understanding how and why mechanical vehicles, plant and equipment work. Through practical activities learners use specialist tools and equipment to identify mechanical faults and complete system maintenance, repairs and adjustments.

Computer Graphics and Design Foundation 2C

Computer Graphics and Design - Foundation develops skills in using computer graphic techniques and processes. A design process is used to create digital content including 2D and 3D digital graphics and animation.

Design and Production 2C

Design and Production develops design thinking, systems thinking and project implementation skills which typify contemporary design practice. A range of technological skills are developed through the use of tools and equipment to transform materials to meet a need in areas such as furniture and homewares, clothing and fashion and tools and devices. At Rosny, students can specialise in Wood, Metals, Textiles or Composite Materials.

Electronics – Foundation 2C

Electronics - Foundation, introduces learners to the basic concepts of electricity and circuits and the skills needed to construct small projects. Learners use a range of testing and prototyping techniques to build and test circuits, culminating in building small circuits from existing designs.

Technical Graphics – Foundation 2C

The study of Technical Graphics - Foundation provides basic skills, knowledge and understanding of freehand, technical (instrument) and Computer Aided Drafting and Design (CADD) drawing to shape and communicate practical solutions to real-world design problems. Learners develop the foundation skills in technical drawing and underpinning geometrical knowledge relevant to engineering, architectural and product design contexts.

Computer Graphics and Design 3C

Computer Graphics and Design focuses on contemporary digital technologies in design and computer graphics by developing skills in the use of processes and systems of 2D & 3D digital graphics and animation. Design principles, processes and practice are applied to create digital visual content. A design process is used to plan, undertake and evaluate a variety of design projects, techniques and complete a range of design briefs and an externally assessed project.

Electronics 3C

Electronics encompasses the theory and practice behind the analysis, design and construction of electronic circuits. This course is designed to allow learners to develop their skills, knowledge and understanding of electronics design. Learners use the engineering design process that draws on scientific, mathematical and engineering knowledge.

Housing and Design 3C

Housing and Design develops architectural skills to respond to design briefs for indoor and outdoor spaces. A design process

is used to develop appropriate responses by researching design precedents and the needs of users and analysing the context and site. Design development and final drawings are communicated using freehand sketching and scale drawing skills.

Certificate II in Automotive Vocational Preparation

This VET program focuses on developing skills required for working in the automotive industry sector. Students learn about work health and safety, automotive workshop practices, mechanical and electrical fundamentals and use of tools and equipment.

Certificate II in Construction

This VET program focuses on developing skills required for working in the construction and allied trades industry sector. Students learn about work health and safety, construction practices and use of tools and equipment.

Certificate II in Creative Industries (Design and Production)

This course offers students the opportunity to develop and apply critical and creative problem solving skills in both traditional and technology focused areas to solve a variety of user experience issues. Real life scenarios such as building design and community lifestyle will be investigated over the year with students developing their own ideas and inventions as solutions. Students will also learn how to manage digital media products and to deliver services to customers.

Introduction to Civil Construction

Civil Construction is a branch of the construction industry involved with the construction and maintenance of both natural and physically built environments such as roads, railways, buildings, and water reservoirs. This qualification reflects the roles of individuals who perform basic procedures, using practical skills and fundamental operational knowledge, and take some responsibility for the quality of work outcomes.

Students in this course will learn about:

- health and safety
- risk management
- communication
- planning and preparing to undertake a task
- hand and power tool operation
- cutting, bending and welding metal
- measurements and calculations



Technologies: Food and Hospitality

Subject	Level	Hours	CP	LIT	NUM	ICT	Recommended Prior Study	Campus
Food and Hospitality Enterprise	2	150	15				No entry requirement	Rosny, Sorell
Food, Cooking and Nutrition	2	150	15				No entry requirement	Rosny
Food and Nutrition	3	150	15	✓			B/C in English	Rosny
Cert II in Hospitality	2	300	30					Rosny
Hospitality - Industry Ready Skill Set	2	300	30					Bayview
Cert II in Kitchen Operations	2	300	30					Rosny

Food and Hospitality Enterprise 2C

This course develops introductory skills in food and beverage production and service through planning and implementing hospitality events and devising food products based on local ingredients. Learners develop generic work related skills and a knowledge of the nature of the food and hospitality sectors and related sectors in primary production and tourism.

Food, Cooking and Nutrition 2C

This course provides students an opportunity to develop knowledge of food and food preparation skills. Students will apply safe food handling practices and food safety hygiene procedures as they work individually and in a team to prepare key foods for a range of contexts. They will learn about the nutritional, sensory and functional properties of foods and prepare healthy meals.

Food and Nutrition 3C

Food and Nutrition provides a broad study of food issues which have ongoing relevance to individuals and community, health and wellbeing. Students will analyse influences on food choice and the effects on dietary behaviour and health. Students critically inquire into the environmental impacts of current food production practices.



Certificate II in Hospitality

This VET program focuses on developing skills required for working in the hospitality industry sector. Students learn food and beverage service, coffee and beverage preparation and team work in a café and restaurant setting.

Hospitality - Industry Ready Skill Set

This VET course will deliver a skill set focused on the training required to work the Hospitality sector. Students interested in gaining experience in areas such as preparing and serving espresso coffee, providing responsible service of alcohol, preparing simple dishes and using hygienic practices for food safety should consider this course.

Certificate II in Kitchen Operations

This VET program focuses on developing skills required for working in the catering industry sector. Students learn food preparation techniques, food hygiene practices and team work in a commercial kitchen setting.



Visual Arts

Subject	Level	Hours	CP	LIT	NUM	ICT	Recommended Prior Study	Campus
Art Making (Mix Media)	1	100	10				No entry requirement	Rosny
Visual Art (one studio)*	2	150	15				No entry requirement	Rosny
Art Practice (three studios)*	2	150	15				No entry requirement	Rosny
Art Production (one studio)	3	150	15				No entry requirement	Rosny
Art Studio Practice	3	150	15				Art Production 3	Rosny
Art Theory and Criticism	3	150	15	✓		✓	A/B in English or SA in English Foundation or equivalent	Rosny

*The visual art courses are studied in the following specialised Studio Areas:

Mixed Media	The study of drawing, painting and mixed media techniques through the exploration of a variety of artistic conventions and art forms. The communication of ideas with a focus on conceptual development and the production of a portfolio of artwork. The course includes artist research and a written theory component.
Photography	The study of black and white film photography with a focus on the conventions of traditional darkroom processes and digital photography techniques. The communication of ideas with a focus on conceptual development and the production of a portfolio of work. The course includes artist research and a written theory component.
Digital Art & Media	The study of 2D print and screen based computer generated art forms through the exploration of a variety of digital techniques. This includes digital imaging, photo manipulation, vector illustration, animation and video installation. The communication of ideas collage with a focus on conceptual development and the production of a portfolio of artwork. The course includes artist research and a written theory component.
Graphic Design	The communication of ideas through the language of typography and the elements and principles of design. The study of techniques related to visual communication, the principles of layout, composition, illustration, logos and poster design with a focus on conceptual development and the production of a portfolio of artwork. The course includes artist research and a written theory component.
Ceramics	The exploration of 3D sculptural and decorative ceramics with a fine art conceptual focus. Techniques and processes includes construction, glaze decoration and firing processes. Students learn to understand the principles of 3D form, the nature of surface and sculptural space. The communication of ideas with a focus on conceptual development and the production of a portfolio of artwork. The course includes artist research and a written theory component.
Art Theory & Criticism	This is a theoretical course designed to teach student to write and speak about art. Students will analyse and interpret artworks while developing research skills aligned to their personal interests in visual art. In addition to this, students will explore social, cultural and historical contexts and discover how they influenced art making. Students are required to complete a number of minor assignments throughout the year before completing a Major research paper based on an area of personal interest.



Visual Art 2C

Visual Art has been developed for learners seeking to engage with art practice in a particular studio area. In this subject learners develop a body of work in a single art studio - developing their technical skills and aesthetic understanding. Methods and processes specific to their studio of choice are introduced and explored. Learners also develop initial skills in the research, analysis and criticism of art. At Rosny students can select from the following studios: Ceramics, Digital Art and Media, Graphic Design, Mixed-Media and Photography.

Art Practice 2C

Learners focus their work in three studios, through which they will discover how to experience, make and respond to works of art. Learners will produce works that are resolved as finished visual art pieces. Learners are also required to develop a support folio of source material that reflects their thinking processes and that serves as a record of their idea generation and development.




Art Production 3C

This course is designed for learners wishing to extend practical work together with analysis and criticism of art. Learners will be familiar with current trends in art and will see their own work in relation to the local, national and global cultural context. Art-making techniques will be developed to advanced levels in order to facilitate the expression of ideas. At Rosny students can select from the following studios: Ceramics, Digital Art and Media, Graphic Design, Mixed-Media and Photography.

Art Studio Practice 3C

This is a year 12 course with the completion of Art Production as a pre-requisite. The course consists of two compulsory areas of learning: Conceptual Knowledge and Practice. Students are required to prepare a research paper, visual schematic overview, artist's statement and present an exhibition.

Art Theory and Criticism 3C



Art Theory and Criticism is designed to teach learners to write and speak/sign about the content, form and contexts of visual art, architecture and design. Learners are engaged in understanding political, social and cultural perspectives which have shaped individuals and movements. They identify and analyse art, design and architectural practices and works across a spectrum of contexts. Through research and inquiry learners will develop analytical and critical thinking skills.

Programs for Students with High or Additional Learning Needs

Subject	Level	Hours
Basic Communication	Pre-1	150
Basic Number Skills	Pre-1	150
Community and Me	Pre-1	150
Environment and Nature	Pre-1	150
Expression through the Arts	Pre-1	150
Prepare for Life	Pre-1	150
Prepare for Work	Pre-1	150
Sport and Recreation for Life	Pre-1	100

Extra Information

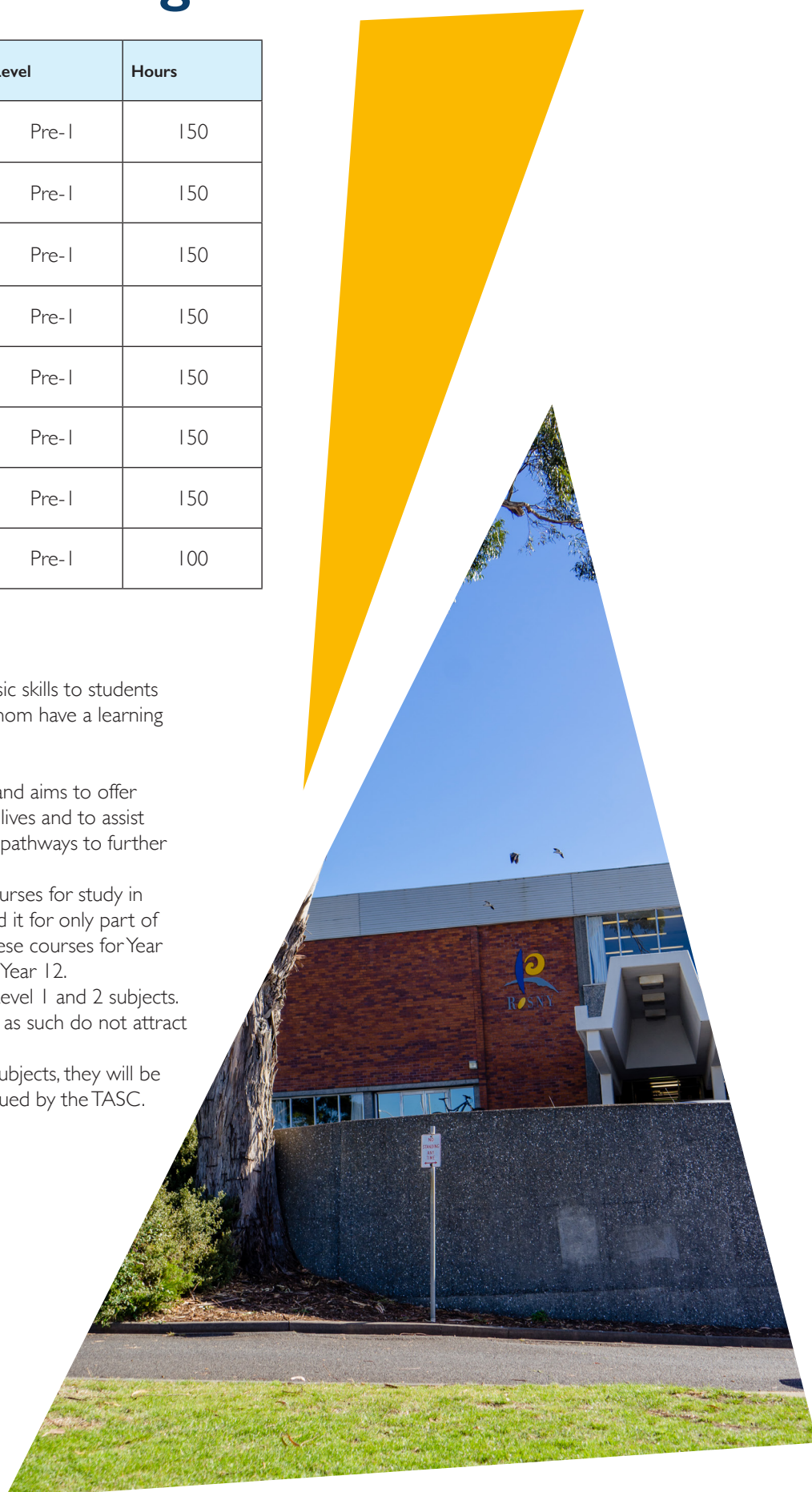
These courses are designed to provide basic skills to students with high and additional needs, many of whom have a learning difficulty.

Each course has a whole-of-life approach and aims to offer better outcomes in all aspects of students' lives and to assist those with disabilities to access achievable pathways to further training and/or employment outcomes.

Some students may need this full set of courses for study in both their Years 11 and 12, some may need it for only part of their course load, and others may need these courses for Year 11 before moving into other programs for Year 12.

Students may also select from a range of Level 1 and 2 subjects. These subjects are "Life Skills" courses and as such do not attract credit points towards the TCE.

If students are successful in passing these subjects, they will be listed on their Qualifications Certificate issued by the TASC.



Essential Skills Courses

Subject	Level	Hours	CP	LIT	NUM	ICT	Recommended Prior Study
Essential Skills – Reading and Writing	2	100	10	✓			C/D English
Essential Skills – Maths	2	50	10		✓		C/D Mathematics
Essential Skills Using Computers and the Internet	2	50	5			✓	C/D English

Extra Information

If you can work independently outside class time, then you might consider one of these essential skills courses. However, if you need assistance with basic skills in literacy, numeracy or ICT, then other courses will be more suitable for you (see the sections: Mathematics, English, Computing).

Essential Skills – Reading and Writing 2B

This course is for students with reasonable skills in reading and writing and who:

- need to meet the literacy standard for the TCE
- need only a little help with achieving accuracy in their written work.

Essential Skills – Maths 2B

This course is ideal for students who have enrolled in pre-tertiary courses and who:

- need to meet the numeracy standard for the TCE
- need only a little help when completing maths problems
- and would prefer not to include mathematics in their chosen pathway.

Essential Skills – Using Computers and the Internet 2A

This course is for students with reasonable computing skills who:

- need to meet the ICT standard for the TCE
- need only a little help when using a computer.

TASC Essential Skills Tests – Year 12 students only

If you are in Year 12 and you still need to meet one of the requirements for the TCE, then you can undertake one or more of these:

- TASC Literacy test
- TASC Numeracy test
- TASC ICT test



Extension and Enrichment

You may also choose to enrol in one or more short courses in addition to your core program. These courses provide opportunities for you to develop new skills and interests, maintain a healthy lifestyle or support your academic learning in specific subject areas.

The courses include:

- academic support including tutorials
- qualifications and certificates
- a range of extension and enrichment courses
- trips and events
- work experience.

There are no entry requirements for extension and enrichment short courses. You can not gain the literacy, numeracy or ICT tick from the extension courses; however, some short courses provide the opportunity to gain credit points. See the listing on page 45.

The extension and enrichment courses are reviewed each year so check the latest list at enrolment time.

Enrolment for enrichment offerings which do not gain students TCE points happens once the college year has started.

Academic Support

Tutorials are an important component of our academic support program and are offered in many subject areas.

College Activities

There are always plenty of things happening at Rosny. It's a great place to learn new skills and to make new friends.

College Community Activities

There is a wide range of opportunities available at the campus to help you involve yourself in the community:

- Harmony Day celebration
- Acoustic and Rock Challenge
- Overseas cultural experiences
- Careers Expo
- Indoor Soccer – World Cup
- Lunchtime quizzes and other activities
- Sports competitions
- International Food Fair

Qualifications and Certificates	
Bronze Medallion	A course requiring commitment to both practical and theory sessions (some practical sessions may occur out of normal college hours). Participants who successfully meet the requirements of the course will earn their Bronze Medallion. Costs incurred for pool entry.
Power Boat Licence Course	Designed to give confidence in powered boat handling with possible attainment of a MAST power boat licence to run vessels over 4 horse power. Small costs involved.
Trips and Events	
Skiing and Snowboarding - Mt Hotham Ski Trip	An off campus course where students will have the opportunity to learn downhill skiing/snowboarding. All costs to be met by students, approximately \$1,400 for the trip including airfares.
Surfing - Learn to Surf Camp	An off campus course involving a weekend camp on the east coast. Camps are offered either as a learn-to-surf or competitive surfing experience. All costs to be met by students, approximately \$110.
Citizenship – College projects	
AGORA Student Yearbook	You will work as part of a team to produce the annual student magazine, AGORA. You will learn about a variety of print media publications, researching, planning and producing a variety of articles, interviewing techniques and final page design stage.

The following enrichment activities do not gain TCE points. You can enrol in these during our Enrichment Expo which will be held at the beginning of Term 1			
Drama Technical Theatre	Badminton	Personal Fitness for Women	Bicycle Maintenance
Guitar for Beginners	Basketball	Rock Climbing	Introduction to CNC Machining
Musical - Audition Preparation	Kayaking and Rafting	Gym Membership	Water Polo
Life Drawing	Mountain Biking	Soccer Indoor	Yoga
Hockey	Golf	Card Games	Bushwalking

TCE Extension Courses

The following extension courses allow you to gain credit points towards the TCE

Subject	Level	Hours	CP	
Road Safety Education	2	50	5	This course is aimed at providing an holistic approach to road safety education by developing positive attitudes and behaviours toward road use through promoting an understanding of the common risk factors people encounter when using our road system.
Performing Arts				
Workshop Techniques - Introduction (Costume Design)	1	100	10	Students will actively participate in exploring the skills required to create and up cycle accessories and costumes particularly for the school musical. Practical collaborative and individual project work is a course requirement.
Project Implementation (Costume Hire)	2	50	5	Participate in management of the Performing Arts Costume Collection and work with internal and external clients. Students will develop knowledge of the collection, as well as communication, time management and teamwork skills.
Music Ensemble 2A (UTAS Wind Ensemble)	2	50	5	Perform with the Combined Colleges and University of Tasmania Wind Ensemble. This course is available to students who have the ability to play an instrument and to read music.
Music Ensemble 2A (Stage Band)	2	50	5	Perform with the College Stage Band. This course is available to students who have the ability to play an instrument (wind/brass/percussion) and to read music.
Music Ensemble 2A (Vocal Ensemble)	2	50	5	Perform with the College Vocal Ensemble. This course is available to all students interested in singing.
Foods and Hospitality				
Coffee Making 2A	2	50	5	In this course you will gain experience using a commercial espresso machine in our college café and gain a nationally recognised qualification in this area
Pastries Cakes and Breads 2A	2	50	5	This is a once a week, practical course where you will cook delicious breads, pastries and sweet treats and gain a nationally recognised qualification in this area.
Responsible Service of Alcohol 2A	2	10	1	RSA (Responsible Service of Alcohol) is delivered on-line and will be available term 2. The cost to students is \$30.
Physical Recreation				
Austswim 2A	2	50	7	A course requiring commitment to both practical and theory sessions leading to qualification as an Austswim teacher (some practical sessions may occur out of normal college hours). Costs incurred for textbook, DVD, registration and certification. (\$250)
First Aid (provide) 2A	2	50	2	St John accredited and valid for three years. Costs incurred for registration and certification (approximately \$30).
First Aid in Remote Situations (provide) 2A	2	50	2	St John accredited course which is valid for three years. The cost to students is \$40. Students must have completed Provide First Aid before enrolling in this course.
SCUBA 2A	2	50	5	An off campus course. An open water dive certificate course that is usually held during school holidays. Costs incurred for registration and certificate (approximately \$400).
Business				
Financial Literacy	2	50	5	Learn financial habits to help you know the secret to being good with your money. This helps you to make the most of what you've got and to make your money work harder for you.
Humanities and Social Sciences				
Societal and Environmental Issues	2	50	5	Become globally aware and investigate an issue of interest in relation to Australia, Asia or the Pacific that may include; access to water, refugee and humanitarian issues or ecotourism and sustainable land management.
STEAM				
Project Implementation (STEAM Makerspace)	2	50	5	This course is designed to learn all aspects of STEAM technology including; Virtual Reality, Drone flying and coding, 3D printing, laser and vinyl cutting. Design and creative thinking will be a strong focus of this course.

Subject Index

A

Accounting 3C	20
AGORA Student Yearbook	44
Agricultural Enterprise 2C	34
Ancient History 3C	25
Art Practice (three studios) 2C	41
Art Production (one studio) 3C	41
Art Studio Practice 3C	41
Art Theory and Criticism 3C	41
Asian Studies (University Connections Program) 3C	25
Athlete Development 2C	23
Austswim 2A	45
Automotive and Mechanical Technologies 2C	37

B

Basic Communication	42
Basic Number Skills	42
Biology 3C	34
Bronze Medallion	44
Business Studies 3C	20
Business Studies - Foundation 2C	20

C

Certificate II in Aged Care/Disability Care	19
Certificate II in Agriculture	35
Certificate II in Animal Studies	35
Certificate II in Aquatics and Community Recreation	23
Certificate II in Automotive Vocational Preparation	37
Certificate II in Business	20
Certificate II in Community Services (focus on Children's Services)	19
Certificate II in Construction	37
Certificate II in Creative Industries (Theatre)	33
Certificate II in Creative Industries (Design and Production)	37
Certificate II in Creative Industries (Media)	33
Certificate II in Dance	33
Certificate II in Hospitality	39
Certificate II in Kitchen Operations	39
Certificate II in Outdoor Recreation	23
Certificate II in Retail Cosmetics	23
Certificate II in Salon Assistant	23
Certificate II in Sport and Recreation	23
Certificate II in Tourism	25
Certificate II in Vocational Pathways	30
Certificate III in Animal Studies	35
Certificate III in Live Production and Services (Theatre)	33
Certificate III in Screen and Media	33
Certificate III in Tourism	25

Certificate III Introduction to Nursing (Health Services Assistant)	19
Certificate IV in Screen and Media	33
Chemistry 4C	35
Coffee Making 2A	45
Community and Me	42
Community Sport & Recreation 2C	23
Computer Graphics and Design 3C	37
Computer Graphics and Design Foundation 2C	37
Computer Science 3C	26
Computing (Business)	26
Computing (Multimedia)	26
Contemporary Music 2C	32

D

Dance 2C	32
Dance Choreography and Performance 3C	32
Design and Production 2C	37
Drama 3C	32
Drama - Foundation 2C	32

E

Economics 3C	20
Electronics 3C	37
Electronics - Foundation 2C	37
Engineering 2C (STEAM)	30
English 3C	21
English Applied 2C	21
English as an Additional Language or Dialect 2C	21
English as an Additional Language or Dialect 3C	21
English Foundation 2C	21
English Literature 3C	21
English Writing 3C	21
Environmental Science 3C	34
Environment and Nature	42
Essential Skills - Maths 2B	43
Essential Skills - Numeracy 2B	43
Essential Skills - Reading and Writing 2B	43
Essential Skills - Using Computers and the Internet 2A	43
Expression through the Arts	42

F

Financial Literacy	45
First Aid in Remote Situations (provide) 2A	45
First Aid (provide) 2A	45
Food and Hospitality Enterprise 2C	38
Food and Nutrition 3C	38
Food Cooking and Nutrition 2C	38
French 3C	27
French - Foundation 2C	27

G			
Geography 3C	25	Personal Health and Wellbeing 2C	23
General Mathematics 3C	28	Philosophy 3C	25
General Mathematics - Foundation 2C	28	Physical Sciences 3C	34
		Physical Sciences - Foundation 2C	34
		Physics 4C	35
H		Power Boat Licence Course	44
Health Studies 3C	23	Prepare for Life	42
History and the Environment 2C	25	Prepare for Work	42
Hospitality – Industry Ready Skillset	39	Project Implementation (STEAM Makerspace)	45
Housing and Design 3C	37	Psychology 3C	18
I			
Information Systems and Digital Technologies 3C	26	R	
Introduction to Civil Construction	37	Responsible Service of Alcohol 2A	45
Introduction to Sociology and Psychology 2C	18	Road Safety Education 2A	45
Introduction to Tourism (Cert II in Tourism - SoA)	25	S	
J		SCUBA 2A	45
Japanese 3C	27	Skiing and Snowboarding	44
Japanese - Foundation 2C	27	Societal and Environmental Issues	45
L		Sociology 3C	19
Legal Studies 3C	25	Sport and Recreation for Life	42
Legal Studies - Foundation 2C	25	Sport Science 3C	23
Life Science 2C	34	Sport Science - Foundation 2C	23
M		Student Directed Inquiry 3C (STEAM Focus)	30
Mathematics Methods 4C	28	Surfing - Learn to Surf Camp	44
Mathematics Methods - Foundation 3C	28	T	
Mathematics Specialised 4C	28	TASC Essential Skills Test	43
Media Production 3C	32	Technical Graphics Foundation 2C	37
Media Production		Technical Theatre Production 2C	32
- Foundation 2C (Screen)	32	Theatre Performance 3C	33
Modern History 3C	25	V	
Music 3C	32	Vet Maritime Operations	23
Music Ensemble 2A	45	Visual Art (one studio) 2C	41
Music - Practical Study (University Connection Program) 3C	33	W	
Music Studies 2C	32	Working with Children 2C	18
Music Technology Projects - Foundation 2C	32	Workshop Techniques – Introduction (Costume Design)	45
Music Technology Projects (University Connections Program) 3C	33	Workplace Maths 2C	28
Music Theatre 2C	32	Work Readiness 2C	30
O			
Other STEAM Offerings	30		
Outdoor Education 2C	23		
Outdoor Leadership 3C	23		
P			
Pastries Cakes and Breads 2A	45		

Accessibility and Accommodation

College Facilities

The teaching and learning facilities include:

- library with an extensive book and journal collection, computer facilities as well as areas for private study
- extensive Intranet supporting study and research
- modern science labs
- gymnasium
- weight room
- auditorium equipped with excellent lighting and sound system
- drama studio
- dance studio
- contemporary sound and recording studios
- TV studio
- spacious art rooms
- ceramics workshop
- photography darkrooms
- metal workshop
- wood centre
- automotive workshop
- computer design centre
- commercial kitchen and dining room
- playgroup centre for Children's Services.

Rosny College has provision for students with mobility and access needs. There is a designated entrance providing level access to the campus, a lift which services most levels and wheelchair access to most teaching areas.

The Break Café

Our cafe is staffed and run by students studying in the hospitality learning area. All food is produced on site and this is a valuable learning experience for our students. The days the cafe is open varies from year to year depending on class times.

Car Park

If you drive to Rosny you can park in the public car park next to the campus. You are reminded that there are speed limits and that general road rules apply in this area.

Accommodation

Clarence

Student residences at Clarence in Hobart provide self-contained motel style units. The Clarence residences are available both for short or long term. For further information contact the Clarence residence on (03) 6244 3611 or email studentresidencesouth@education.tas.gov.au.

New Town

Springvale Hostel in Midwood Street, New Town, provides hostel-style, single room, full board accommodation to students aged from 16 to 19 years old on either a five or seven day basis. For further information please contact the manager on (03) 6228 1282, email springvale@southcom.com.au or visit their website: www.springvalehostel.com.au.

Rosny

A limited number of independent units located 10 minutes from Rosny College are available to full time students enrolled at the campus, who have an independent income. These are administered by Housing Connect who give the students support to live independently. For more information please contact Housing Connect 1800 800 588.

Financial Support

Financial support for accommodation that is available for students and parents includes:

- Student Accommodation Allowance (SAA). For more information call 1800 816 057.
- Living Away From Home Allowance. For more information head to www.humanservices.gov.au/customer/enablers/higher-rates-youth-allowance-when-living-away-home
- Assistance for Isolated Children (AIC). For more information head to www.humanservices.gov.au/customer/services/centrelink/assistance-isolated-children-scheme



2019 Vocational Education and Training

This General Information Guide details the Vocational Educational and Training (VET) programs offered by Teggana Collective. All VET programs delivered are nationally recognised. Details available at the National Register – training.gov.au/Home/Tga

Registered Training Organisation is Tasmanian Secondary Colleges code 60100 unless specified

Code	Title	Campus
*ACM20117	Certificate II in Animal Studies	Sorell School
*ACM30117	Certificate III in Animal Studies	Sorell School
*AHC20116	Certificate II in Agriculture	Sorell School
AUR20716	Certificate II in Automotive Vocational Preparation	Rosny College
BSB20115	Certificate II in Business	Rosny College
CHC22015	Certificate II in Community Services (Focus on Aged Care and Disability)	Rosny College
CHC22015	Certificate II in Community Services (Focus on Children's Services)	Rosny College
CPC20211	Certificate II in Construction Pathways	Rosny College
*CPC20211	Certificate II in Construction Pathways	Sorell School
RII20115	Certificate II in Resources and Infrastructure Work Preparation (Introduction to Civil Construction) RTO TasTAFE 60142	Bayview Secondary College
CUA20215	Certificate II in Creative Industries (focus on Screen and Media)	Rosny College
CUA20215	Certificate II in Creative Industries (focus on Live Production and Services)	Rosny College
CUA31015	Certificate III in Screen and Media	Rosny College
CUA41215	Certificate IV in Screen and Media	Rosny College
CUA20113	Certificate II in Dance RTO Australian Dance Council code 20949	Bayview Secondary College
FSK20113	Certificate II in Skills for Work and Vocational Pathways	Rosny College
*HLT33115	Certificate III in Health Services Assistant (SoA) (Introduction to Nursing)	Bayview Secondary College
MAR20313 SFI30211 SIS30313	Introduction to Maritime Operations (Statements of Attainment) Certificate II in Maritime Operations (Coxswain Grade I Near Coastal) (SoA) Certificate III in Fishing Operations (SoA) Certificate III in Fitness (SoA) RTO Seafood Training Tas code 7074	Rosny College
*SHB20216	Certificate II in Salon Assistant	Bayview Secondary College
SIS20115	Certificate II in Sport and Recreation	Rosny College
SIS20213	Certificate II in Outdoor Recreation	Rosny College
SIT20116	Certificate II in Tourism (Introduction to Tourism – SoA)	Rosny College
SIT20316	Certificate II in Hospitality	Rosny College
*SIT20316	Certificate II in Hospitality (SoA) RTO TasTAFE 60142	Bayview Secondary College
SIT20416	Certificate II in Kitchen Operations	Rosny College
SIT30116	Certificate III in Tourism	Rosny College
*UEE22011	Certificate II in Electrotechnology (Career Start)	Sorell School
Enrichment Courses AUSTSWIM SIS31015 Certificate II in Aquatics and Community Recreation (SoA) Tasmanian Secondary Colleges code 60100 Coffee A SIT20316 Certificate II in Hospitality (SoA) Tasmanian Secondary Colleges code 60100 Pastries Cakes and Yeast Goods SIT20416 Certificate II in Kitchen Operations (SoA) Tasmanian Secondary Colleges code 60100 RSA SIT20316 Certificate II in Hospitality (SoA) Eclipse Vale code 32252 * subject to Memorandum of Understanding with Tasmanian Secondary Colleges		

Planning for Enrolment

Choosing your subjects

Be guided by your personal and career goals as well as your learning needs.
Refer to your pathway plan and transition profile to complete the following:

Tick one or more boxes and where possible add a description or focus area such as industry or university faculty. Note any questions you would like to raise with the subject counsellor:

- ☐ University, including possible faculty/faculties
Prerequisite subjects
Remember to check with the relevant university including any mainland universities you may wish to attend
- ☐ Vocational (VET area), including possible area(s)
Prerequisite subjects
- ☐ TasTAFE, including possible area(s)
Prerequisite subjects
- ☐ Apprenticeship, including possible area(s)
Prerequisite subjects
- ☐ Work, including possible area(s)
Prerequisite subjects
- ☐ Undecided – possible area(s)

If you are having difficulty deciding on a career path

- Highlight the subjects you want to know more about.
- Rule out the subjects you are definitely not interested in.
- Remember to plan a two year program.



Plan for Year 11 – what is your plan to achieve the TCE?

	Subject	Level	Hours	CP	LIT	NUM	ICT
1							
2							
3							
4							
5							
6							
2	Total						

Plan for Year 12 – what is your plan to achieve the TCE?

	Subject	Level	Hours	CP	LIT	NUM	ICT
1							
2							
3							
4							
5							
6							
2	Total						

Activities that I participate in outside school:

I would like to try:

Study Loads

For Years 11 and 12, the recommended study load at Rosny is 600 hours. This will be comprised mainly of TASC subjects or a VET (certificate) program as your core subjects. All students will also be enrolled in a Support Group.

Note: Students below 600 hours will not be eligible for Youth Allowance.

Pathway for 2019 Checklist

Have you checked:
recommended prior study the number of hours?
that you are on track to meet the TCE requirements that you have put in your VET expression of interest for Rosny Based Programs
the notes on page 15 if you are attempting Pre-Tertiary subjects your enrolment date at the back of this document?

For students new to the Department of Education on enrolment day, bring along 50 points of I.D.

Connect with us

✉ rosny.college@education.tas.gov.au

🌐 rosnyc.schoolzineplus.com/rosnycollege

📘 www.facebook.com/RosnyCollege/

Installing the Schoolzine App

Download and Install the Schoolzine Rosny College App

Apple Devices:

1. On your device, open the App Store.AU
2. Search the App Store for SZapp
3. Download and install SZapp

Android Devices:

1. On your device, open the Play Store.
2. Search the Play Store for SZapp
3. Download and install SZapp

Click the link below for detailed instructions:

www.schoolzine.com/szapp-installation



Bastick Street, Rosny Park
Tasmania, 7018

PO Box 424, Rosny Park
Telephone: (03) 6244 9200
Facsimile: (03) 6244 9299

